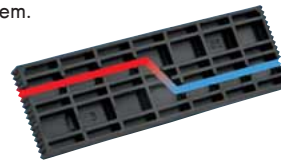
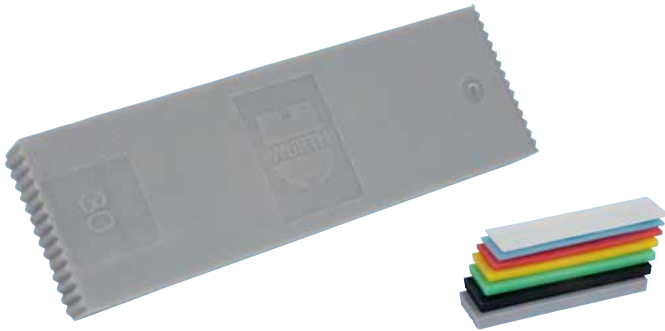


GLAZING BLOCKS

For long-lasting, proper block setting of glazing units.

- Material: polypropylene.
- Resistant to aging.
- Temperature resistant.
- High load-bearing capacity thanks to an optimized stay system.
- Tested compatibility with common glazing sealants (based on polysulfide, polyurethane and silicone).
- ◀ Ventilation duct for steam pressure compensation (starting with a block width of 32 mm and a thickness of 2 mm).



| Length in mm | Color | Thickness in mm | Width 20 mm Art. No. | Width 22 mm Art. No. | Width 24 mm Art. No. | Width 26 mm Art. No. | Width 28 mm Art. No. | Width 30 mm Art. No. | P.Qty. |
|--------------|--------|-----------------|----------------------|----------------------|----------------------|----------------------|----------------------|----------------------|--------|
| 100 | White | 1 | 0875 520 1 | 0875 522 1 | 0875 524 1 | 0875 526 1 | 0875 528 | 0875 530 1 | 1,000 |
| | Blue | 2 | 0875 520 2 | 0875 522 2 | 0875 524 2 | 0875 526 2 | 0875 528 2 | 0875 530 2 | |
| | Red | 3 | 0875 520 3 | 0875 522 3 | 0875 524 3 | 0875 526 3 | 0875 528 3 | 0875 530 3 | |
| | Yellow | 4 | 0875 520 4 | 0875 522 4 | 0875 524 4 | 0875 526 4 | 0875 528 4 | 0875 530 4 | |
| | Green | 5 | 0875 520 5 | 0875 522 5 | 0875 524 5 | 0875 526 5 | 0875 528 5 | 0875 530 5 | |
| | Black | 6 | 0875 520 6 | 0875 522 6 | 0875 524 6 | 0875 526 6 | 0875 528 6 | 0875 530 6 | |
| | Gray | 8 | - | 0875 522 8 | 0875 524 8 | 0875 526 8 | - | 0875 530 8 | 500 |

Ideal for triple glazing.

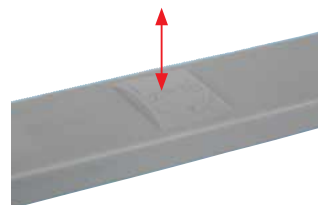
| Length in mm | Color | Thickness in mm | Width 32 mm Art. No. | Width 34 mm Art. No. | Width 36 mm Art. No. | Width 38 mm Art. No. | Width 40 mm Art. No. | Width 42 mm Art. No. | P. Qty. |
|--------------|--------|-----------------|----------------------|----------------------|----------------------|----------------------|----------------------|----------------------|---------|
| 100 | White | 1 | 0875 532 1 | 0875 534 1 | 0875 536 1 | 0875 538 1 | 0875 540 1 | 0875 542 1 | 500 |
| | Blue | 2 | 0875 532 2 | 0875 534 2 | 0875 536 2 | 0875 538 2 | 0875 540 2 | 0875 542 2 | |
| | Red | 3 | 0875 532 3 | 0875 534 3 | 0875 536 3 | 0875 538 3 | 0875 540 3 | 0875 542 3 | |
| | Yellow | 4 | 0875 532 4 | 0875 534 4 | 0875 536 4 | 0875 538 4 | 0875 540 4 | 0875 542 4 | |
| | Green | 5 | 0875 532 5 | 0875 534 5 | 0875 536 5 | 0875 538 5 | 0875 540 5 | 0875 542 5 | |
| | Black | 6 | 0875 532 6 | 0875 534 6 | 0875 536 6 | 0875 538 6 | 0875 540 6 | 0875 542 6 | |

| Length in mm | Color | Thickness in mm | Width 44 mm Art. No. | Width 46 mm Art. No. | Width 48 mm Art. No. | Width 50 mm Art. No. | P. Qty. |
|--------------|--------|-----------------|----------------------|----------------------|----------------------|----------------------|---------|
| 100 | White | 1 | 0875 544 1 | 0875 546 1 | 0875 548 1 | 0875 550 1 | 500 |
| | Blue | 2 | 0875 544 2 | 0875 546 2 | 0875 548 2 | 0875 550 2 | |
| | Red | 3 | 0875 544 3 | 0875 546 3 | 0875 548 3 | 0875 550 3 | |
| | Yellow | 4 | 0875 544 4 | 0875 546 4 | 0875 548 4 | 0875 550 4 | |
| | Green | 5 | 0875 544 5 | 0875 546 5 | 0875 548 5 | 0875 550 5 | |
| | Black | 6 | 0875 544 6 | 0875 546 6 | 0875 548 6 | 0875 550 6 | |



With anti-slipping protection.

- The material and properties are the same as the standard glazing blocks.



◀ A molded-in "spring element" prevents slippage after block setting of the vertical sides of the window element.

| Length in mm | Color | Thickness in mm | Width 24 mm Art. No. | Width 26 mm Art. No. | P. Qty. |
|--------------|--------|-----------------|----------------------|----------------------|---------|
| 100 | White | 1 | 0875 424 1 | 0875 426 1 | 1,000 |
| | Blue | 2 | 0875 424 2 | 0875 426 2 | |
| | Red | 3 | 0875 424 3 | 0875 426 3 | |
| | Yellow | 4 | 0875 424 4 | 0875 426 4 | |
| | Green | 5 | 0875 424 5 | 0875 426 5 | |
| | Black | 6 | 0875 424 6 | 0875 426 6 | |
| | Gray | 8 | 0875 424 8 | 0875 426 8 | 500 |



Verification of compatibility of glazing blocks with cured sealants of the insulating glass edge composite
Test report 607 41481/4

Testing was carried out in accordance with Rosenheim Institute of Window Technology Directive VE 05/01 "Verification of the compatibility of glazing blocks" in conjunction with common sealants of the insulating glass edge composite based on polysulfide, polyurethane, silicone and Würth Natural Stone Sealant **Art. No. 0893 350 0** and Würth Glass Active Sealing Compound **Art. No. 0893 350 803**.