

# Blind Rivet

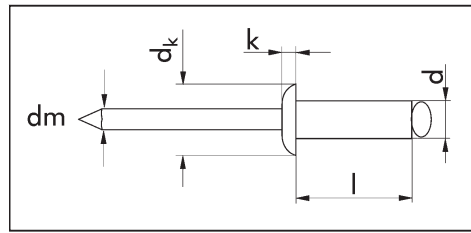
## Round pan head

Sleeve: Aluminum  
Pin: Aluminum

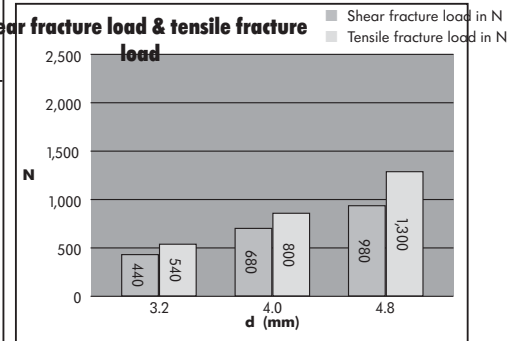
Standard rivet range



ORSY



d x l in mm	Drilled hole dia. in mm	Clamping in mm	dk range in mm	k in mm	dm in mm	Shear approx. load N	Tensile fracture load N	Art. No. fracture	P. Qty.
3.2 x 8.0	3.1	3.5 - 5.5	6.0	1.0	1.9	440	540	<b>0937 732 8</b>	500
4.0 x 6.5	4.1	1.0 - 4.0	8.0	1.0	2.4	680	800	<b>0937 74 65</b>	500
4.0 x 8.5	4.1	4.0 - 5.5						<b>0937 74 85</b>	500
4.0 x 10.5	4.1	5.5 - 7.5						<b>0937 74 105</b>	500
4.0 x 12.5	4.1	7.5 - 9.5						<b>0937 74 125</b>	500
4.8 x 7.5	4.9	1.0 - 3.5						9.5	1.1
4.8 x 9.5	4.9	3.5 - 6.0	<b>0937 748 95</b>	500					
4.8 x 11.5	4.9	6.0 - 7.5	<b>0937 748 115</b>	500					
4.8 x 13.5	4.9	7.5 - 9.5	<b>0937 748 135</b>	500					
4.8 x 16.5	4.9	9.5 - 12.5	<b>0937 748 165</b>	500					



# Blind Rivets

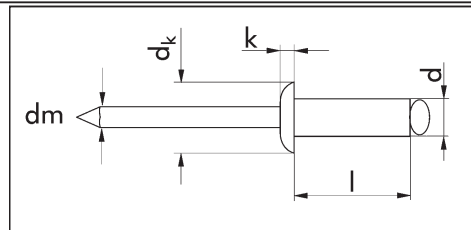
## Round pan head and large set head

Sleeve: Aluminum  
Pin: A2 stainless steel

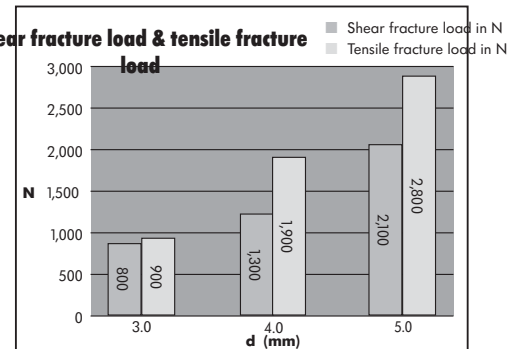
Standard rivet range



ORSY



d x l in mm	Drilled hole dia. in mm	Clamping in mm	dk range in mm	k in mm	dm in mm	Shear approx. load N	Tensile fracture load N	Art. No. fracture	P. Qty.
3.0 x 8.0	3.1	3.5 - 5.5	6.5	0.8	1.8	800	900	<b>0939 3 8</b>	500
4.0 x 6.0	4.1	1.5 - 3.0	8.0	1.0	2.2	1,300	1,900	<b>0939 4 6</b>	500
4.0 x 8.0	4.1	3.0 - 5.0	8.0	1.0				<b>0939 4 8</b>	500
4.0 x 10.0	4.1	5.0 - 6.5	8.0	1.0				<b>0939 4 10</b>	500
4.0 x 12.0	4.1	6.5 - 8.5	8.0	1.0				<b>0939 4 12</b>	500
4.0 x 16.0	4.1	8.5 - 12.5	8.0	1.0				<b>0939 4 16</b>	500
4.0 x 20.0	4.1	12.5 - 16.5	8.0	1.0				<b>0939 4 20</b>	500
5.0 x 10.0	5.1	4.5 - 6.0	9.5	1.1				2.7	2,100
5.0 x 12.0	5.1	6.0 - 8.0	9.5	1.1	<b>0939 5 12</b>	500			
5.0 x 14.0	5.1	8.0 - 10.0	9.5	1.3	<b>0939 5 14</b>	250			
5.0 x 16.0	5.1	10.0 - 12.0	9.5	1.3	<b>0939 5 16</b>	250			
5.0 x 18.0	5.1	12.0 - 14.0	9.5	1.3	<b>0939 5 18</b>	250			
5.0 x 20.0	5.1	14.0 - 15.0	9.5	1.3	<b>0939 5 20</b>	250			
5.0 x 25.0	5.1	15.0 - 20.0	9.5	1.3	<b>0939 5 25</b>	250			
5.0 x 30.0	5.1	20.0 - 25.0	9.5	1.3	<b>0939 5 30</b>	100			
5.0 x 8.0	5.1	2.5 - 4.5	14.0	1.8	<b>0939 15 8</b>	250			
5.0 x 10.0	5.1	4.5 - 6.0	14.0	1.8	<b>0939 15 10</b>	250			
5.0 x 12.0	5.1	6.0 - 8.0	14.0	1.8	<b>0939 15 12</b>	250			
5.0 x 14.0	5.1	8.0 - 10.0	14.0	1.8	<b>0939 15 14</b>	250			
5.0 x 16.0	5.1	10.0 - 12.0	14.0	1.8	<b>0939 15 16</b>	250			
5.0 x 18.0	5.1	12.0 - 14.0	14.0	1.8	<b>0939 15 18</b>	250			
5.0 x 20.0	5.1	14.0 - 15.0	14.0	1.8	<b>0939 15 20</b>	250			
5.0 x 25.0	5.1	15.0 - 20.0	14.0	1.8	<b>0939 15 25</b>	250			
5.0 x 30.0	5.1	20.0 - 25.0	14.0	1.8	<b>0939 15 30</b>	250			



Art. No. 0939 3 ... / 0939 4 ... / 0939 5 ... / 0939 15 ...