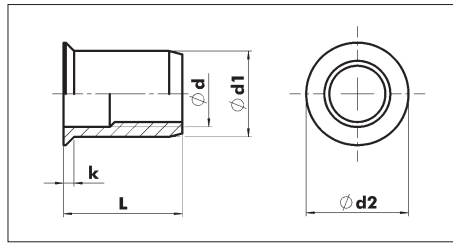


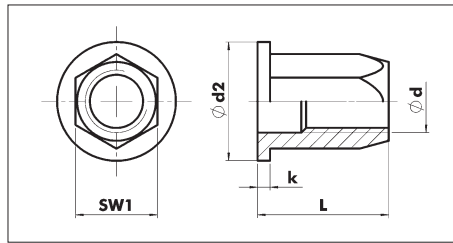
RIVET NUTS



with small countersunk head

Stainless steel A2

Thread dia. d	Drilled hole dia. in mm	Clamping area s in mm	Thread dia. d ₂ in mm	Head height k mm	d ₁ in mm	l in mm	Art. No.	P. Qty.
M4	7	0.25 - 3.00	8.0	0.4	6.95	10.5	0942 14	100
M5	7	0.25 - 3.00	8.0	0.4	6.95	11.5	0942 15	100
M6	8	0.25 - 3.00	9.0	0.4	7.95	13	0942 16	100
M8	10	0.25 - 3.00	11.0	0.4	9.95	15.5	0942 18	50



with round pan head and hexagon shank

Galvanized steel, yellow passivated

- Especially for vehicles from VW and Daimler

Thread dia. d	Punched hole dia. SW ₁ in mm	Clamping area s in mm	d ₂ in mm	Head height k in mm	Size in mm	l in mm	Art. No.	P. Qty.
M5	7.1	0.5 - 3.0	10.0	1.0	7.0	12.5	0948 305 12	100
M6	9.1	0.5 - 3.0	13.0	1.5	9.0	14.5	0948 306 14	100