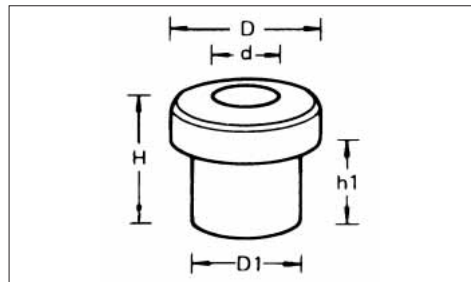
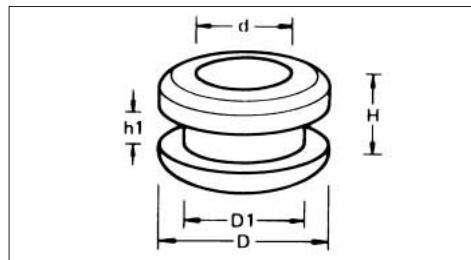


GROMMETS FOR CABLES AND WIRES



Single flanged						
d mm	D1 mm	D mm	H mm	h1 mm	Art. No.	Pack Qty.
6	10	14	12	8	0561 663 6	25/100
8	11	16	13	9	0561 663 8	25/100
10	14	18	15	10	0561 664 0	25/100
12	17	20	17	11	0561 664 2	25/100

ORSY® storable



Double flanged						
d mm	D1 mm	D mm	H mm	h1 mm	Art. No.	Pack Qty.
6	9	11	6	1	0561 663 2	25/100
4.5	6.5	9.5	6	1.2	0561 663 4	25/100
6	9.8	12.7	8	2	0561 664 6	25/100
9	11	16	6.5	1	0561 664 8	25/100
10	12	18	8	1	0561 665 0	25/100
12	20	23.8	10	4	0561 665 2	25/100
13	21	26	9	2	0561 666 2	25/100
16	24	30	11	3	0561 666 3	25/100
21	31	38	11	1.5	0561 666 5	25/100
25	30	36	11	3.5	0561 666 6	25/100

ORSY® storable

- Resistant to corrosion, weathering (heat), ageing, ozone, oil, splashes from petrol and solvents
- Temperature range: - 40 °C to +120 °C
- Silicone-free
- ROHS conforme
- Tolerances acc. to ISO 3302-1 M2
- Material: EPDM caoutchouc
- Colour: black

Assortments

- Material: EPDM caoutchouc
- Tolerances acc. to ISO 3302-1 M2



Art. No. 0964 561 6
Pack Qty. 1

Cable Lead-through Bushes 1

double-sided

contents: 8 sizes

from 4 x 9 - 21 x 38 mm = 555 pieces



Art. No. 0964 561 61
Pack Qty. 1

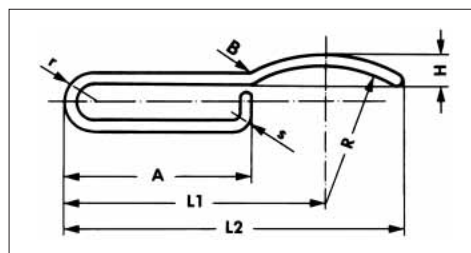
Cable Lead-through Bushes 2

single and double-sided

contents: 12 sizes

from 4 x 9 - 21 x 38 mm = 200 pieces

CHASSIS CLAMPS



Dimensions mm	L1 mm	L2 mm	A mm	B mm	H mm	E mm	r mm	s mm	Art. No.	Pack Qty.
28 x 12 x 0.6	22	28	15	12	3	6	0.6	2.8	0505 28	100/300
43 x 12 x 0.8	31	43	24	12	4	9	2.5	0.8	0505 40	100/300

ORSY® storable

- Galvanised
- For attaching cables and lines to the vehicle chassis, especially of lorries and trailers
- Corrosion resistant