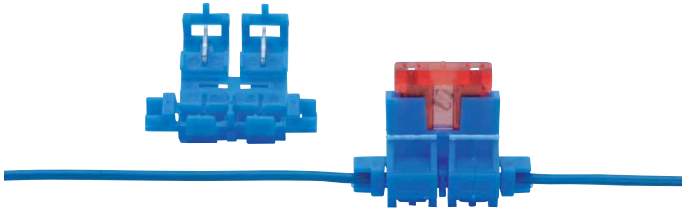


FUSE HOLDER FOR FLAT BLADE FUSES ATO



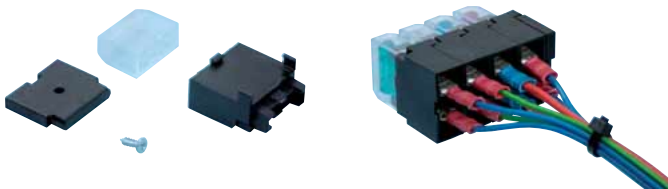
For direct cable clamping

for cable (mm ²)	Amps	Art. no.	PU/qty.
0.75 - 2.0	Max. 20	0555 972	25

Storable in ORSY®

*These specified amperages are guidelines for using our fuses **art. pre-no. 0731** and in particular depending on the fuse manufacturer used, the temperature, installation location etc.

FUSE HOLDER FOR FLAT BLADE FUSES ATO



Housing with wall bracket

- Stackable

For push-on receptacles (mm)	Amps	Art. no.	PU/qty.
6.3 x 0.8	Max. 30	0555 973	25

Storable in ORSY®