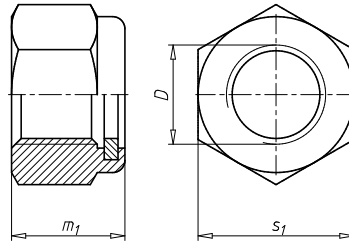


## HEXAGON NUT, LOW PROFILE, WITH CLAMPING PIECE (NON-METAL INSERT)

DIN 985, steel I6I/I8I, galvanised blue passivated (A2K)



<b>Norms</b>	DIN 985
<b>Material</b>	Steel
<b>Surface</b>	Galvanised
<b>RoHS-compliant</b>	Yes
<b>Form</b>	Low
<b>Version</b>	Polyamide clamping piece

Thread type x nominal diameter (D)	Height (m <sub>1</sub> )	External drive (s <sub>1</sub> )	Property class	Art. No.	P. Qty.
M3	4 mm	WS5.5	I6I	<b>0368 3</b>	100/300/1000
M4	5 mm	WS7	I6I	<b>0368 4</b>	100/300/1000
M5	5 mm	WS8	I6I	<b>0368 5</b>	100/300/1000
M6	6 mm	WS10	I8I	<b>0368 6</b>	100/250/1000
M7	7.5 mm	WS11	I8I	<b>0368 7</b>	100/500
M8	8 mm	WS13	I8I	<b>0368 8</b>	100/300/500
M10	10 mm	WS17	I8I	<b>0368 10</b>	100/300/500
M12	12 mm	WS19	I8I	<b>0368 12</b>	100/300
M14	14 mm	WS22	I8I	<b>0368 14</b>	50/100
M16	16 mm	WS24	I8I	<b>0368 16</b>	50/100
M18	18.5 mm	WS27	I8I	<b>0368 18</b>	25
M20	20 mm	WS30	I8I	<b>0368 20</b>	25/100
M22	22 mm	WS32	I8I	<b>0368 22</b>	25
M24	24 mm	WS36	I8I	<b>0368 24</b>	25/50
M27	27 mm	WS41	I8I	<b>0368 27</b>	5
M30	30 mm	WS46	I8I	<b>0368 30</b>	5/25
M33	33 mm	WS50	I8I	<b>0368 33</b>	15
M36	36 mm	WS55	I8I	<b>0368 36</b>	25
M39	39 mm	WS60	I8I	<b>0368 39</b>	10
M42	42 mm	WS65	I8I	<b>0368 42</b>	10
M48	48 mm	WS75	I8I	<b>0368 48</b>	1

### Notice

- Hexagon nuts with lower nominal height complying with DIN 985 cannot support test loads as per ISO 898-2
- The strength class designation has two vertical bars added before and after the strength code to differentiate.

DIN 985 has been withdrawn and replaced by ISO 10511. There is some limited similarity (thread M7, M18, M22, M27, M33 and threads with nominal diameter > M36 removed | Fine thread removed | Nut height changed | Width across flats changed for threads M10, M12 and M14 to 16, 18 and 21 mm | Strength classes changed to 04 and 05).