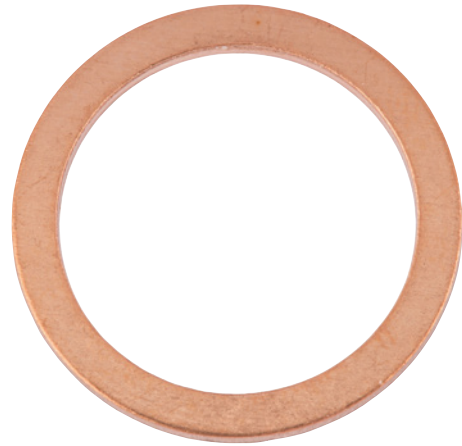


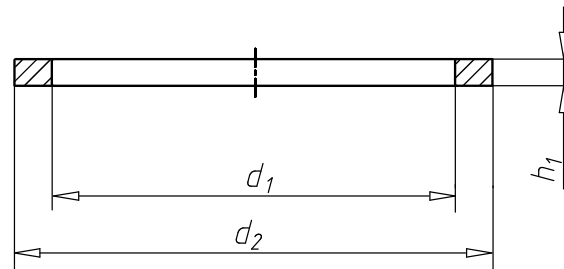
Sealing ring, copper, shape A

Shape A

- A copper ring can be used anywhere (except in the presence of some strong acids) due to its corrosion resistance. Via special pre-heating, the metal ring's structure softens further so that, when under pressure, it can embed itself into all the uneven areas of the parts to be screwed together.



Material	Copper
Surface	Plain
RoHS-compliant	Yes
Form	A
Max. temperature resistance	300 °C



Outer diameter (d ₂)	Internal diameter (d ₁)	Thickness (h ₁)	Nominal size	Corresponds to original spare part number	Art. no.	P. Qty.
7.4 mm	5.2 mm	1 mm	5 x 7,5 mm		0460 5 75	100
7.9 mm	4.2 mm	1 mm	4 x 8 mm		0460 4 8	100/1000
7.9 mm	5.7 mm	1 mm	5.5 x 8 mm		0460 55 8	200
8.9 mm	5.2 mm	1 mm	5 x 9 mm		0460 5 9	100/1000
9.4 mm	6.7 mm	1 mm	6.5 x 9.5 mm		0460 65 95	1000
9.9 mm	6.2 mm	1 mm	6 x 10 mm		0460 6 10	100/300
9.9 mm	8.2 mm	1 mm	8 x 10 mm		0460 8 10	1000
10.9 mm	6.7 mm	1 mm	6.5 x 11 mm		0460 65 11	500
11.4 mm	8.2 mm	1 mm	8 x 11.5 mm		0460 8 115	100/2000
11.9 mm	6.2 mm	1 mm	6 x 12 mm		0460 6 12	50/100
11.9 mm	8.2 mm	1 mm	8 x 12 mm		0460 8 12	50/100 /5000
11.9 mm	10.2 mm	1 mm	10 x 12 mm		0460 10 12	100
12.9 mm	8.2 mm	1 mm	8 x 13 mm		0460 8 13	1000
13.4 mm	10.2 mm	1 mm	10 x 13.5 mm		0460 10 135	2500
13.9 mm	8.2 mm	1 mm	8 x 14 mm		0460 8 14	50/100 /500
13.9 mm	8.2 mm	1.5 mm	8 x 14 mm		0460 8 141	1000
13.9 mm	10.2 mm	1 mm	10 x 14 mm		0460 10 14	100/300 /2500
13.9 mm	10.2 mm	1.5 mm	10 x 14 mm		0460 10 141	1000
13.9 mm	10.2 mm	2.5 mm	10 x 14 mm		0460 101 425	500
14 mm	11 mm	1 mm	11 x 14 mm		0460 111 410	1000
14.9 mm	10.2 mm	1 mm	10 x 15 mm		0460 10 15	2500

Outer diameter (d ₂)	Internal diameter (d ₁)	Thickness (h ₁)	Nominal size	Corresponds to original spare part number	Art. no.	P. Qty.
15.4 mm	12.2 mm	1.5 mm	12 x 15.5 mm		0460 12 155	500
15.9 mm	10.2 mm	1 mm	10 x 16 mm		0460 10 16	100/300 /2500
15.9 mm	10.2 mm	1.5 mm	10 x 16 mm		0460 10 161	1000
15.9 mm	12.2 mm	1.5 mm	12 x 16 mm	VW/Audi: N.013 818.2	0460 12 16	100/500
16.9 mm	10.2 mm	1.5 mm	10 x 17 mm		0460 101 715	200
16.9 mm	12.2 mm	1.5 mm	12 x 17 mm		0460 12 17	50/1000
16.9 mm	13.7 mm	1.5 mm	13 x 17 mm		0460 135 171	1000
17.9 mm	10.2 mm	1 mm	10 x 18 mm		0460 10 18	100/1000
17.9 mm	12.2 mm	1.5 mm	12 x 18 mm		0460 12 18	100/300 /1000
17.9 mm	13.2 mm	1 mm	13 x 18 mm		0460 13 181	500
17.9 mm	13.2 mm	1.5 mm	13 x 18 mm		0460 13 18	100/300 /500
17.9 mm	14.2 mm	1.5 mm	14 x 18 mm		0460 14 18	100/300 /1000
18.9 mm	15.2 mm	1.5 mm	15 x 19 mm		0460 15 19	500
19.9 mm	11.2 mm	2 mm	11 x 20 mm		0460 11 202	100
19.9 mm	12.2 mm	2 mm	12 x 20 mm		0460 12 202	200
19.9 mm	13.2 mm	1 mm	13 x 20 mm		0460 13 201	100
19.9 mm	13.2 mm	2 mm	13 x 20 mm		0460 13 202	500
19.9 mm	14.2 mm	1.5 mm	14 x 20 mm		0460 14 20	100/300 /500
19.9 mm	14.2 mm	2.5 mm	14 x 20 mm		0460 14 203	500
19.9 mm	14.2 mm	3 mm	14 x 20 mm		0460 142 030	100
19.9 mm	15.2 mm	1.5 mm	15 x 20 mm		0460 15 20	100
19.9 mm	16.2 mm	1.5 mm	16 x 20 mm		0460 16 20	100/300 /1000
20.9 mm	17.2 mm	1.5 mm	17 x 21 mm		0460 17 21	10/100 /1000
21.9 mm	14.2 mm	1.5 mm	14 x 22 mm		0460 14 22	100/300 /1000
21.9 mm	16.2 mm	1.5 mm	16 x 22 mm		0460 16 22	100/300 /500
21.9 mm	18.2 mm	1.5 mm	18 x 22 mm		0460 18 22	50/100 /500
22.9 mm	17.2 mm	1.5 mm	17 x 23 mm		0460 17 23	50/100
23.9 mm	16.2 mm	1.5 mm	16 x 24 mm		0460 16 24	100/1000
23.9 mm	16.2 mm	2 mm	16 x 24 mm		0460 16 242	1000
23.9 mm	18.2 mm	1.5 mm	18 x 24 mm		0460 18 24	50/100 /500
23.9 mm	20.2 mm	1.5 mm	20 x 24 mm		0460 20 24	50/100 /1000
24.9 mm	13.7 mm	2 mm	13 x 25 mm		0460 135 252	100
25.9 mm	20.2 mm	1.5 mm	20 x 26 mm		0460 20 26	50/100 /1000
25.9 mm	21.2 mm	1.5 mm	21 x 26 mm		0460 21 26	50/100 /1000
26.9 mm	22.2 mm	1.5 mm	22 x 27 mm		0460 22 27	50/100 /1000
27.9 mm	21.2 mm	1.5 mm	21 x 28 mm		0460 21 28	50/100 /500
27.9 mm	23.3 mm	1.5 mm	23 x 28 mm		0460 23 28	100
28.9 mm	22.2 mm	1.5 mm	22 x 29 mm		0460 22 29	50/100

Outer diameter (d ₂)	Internal diameter (d ₁)	Thickness (h ₁)	Nominal size	Corresponds to original spare part number	Art. no.	P. Qty.
28.9 mm	24.3 mm	2 mm	24 x 29 mm		0460 24 29	50
29.9 mm	24.3 mm	2 mm	24 x 30 mm		0460 24 30	10/50 /100/500
30.9 mm	26.3 mm	2 mm	26 x 31 mm		0460 26 31	500
31.9 mm	24.3 mm	2 mm	24 x 32 mm		0460 24 32	50/100
31.9 mm	26.3 mm	1 mm	26 x 32 mm		0460 26 321	200
31.9 mm	26.3 mm	2 mm	26 x 32 mm		0460 26 32	50/100
31.9 mm	27.3 mm	2 mm	27 x 32 mm		0460 27 32	50/100 /300/500
32.9 mm	28.3 mm	2 mm	28 x 33 mm		0460 28 33	100
33.9 mm	26.3 mm	2 mm	26 x 34 mm		0460 26 34	50/100 /500
33.9 mm	28.3 mm	2 mm	28 x 34 mm		0460 28 34	50/100 /200
34.9 mm	30.3 mm	2 mm	30 x 35 mm		0460 303 510	100
35.9 mm	30.3 mm	2 mm	30 x 36 mm		0460 30 36	25/100
37.9 mm	30.3 mm	2 mm	30 x 38 mm		0460 30 38	25/100
37.9 mm	32.3 mm	2 mm	32 x 38 mm		0460 32 38	25
38.9 mm	33.3 mm	2 mm	33 x 39 mm		0460 33 39	25/100
40 mm	35 mm	2 mm	35 x 40 mm		0460 354 02	100
40.9 mm	33.3 mm	2 mm	33 x 41 mm		0460 33 41	25/100
40.9 mm	35.3 mm	2 mm	35 x 41 mm		0460 35 41	25
41.9 mm	36.3 mm	2 mm	36 x 42 mm		0460 36 42	25/100
43.9 mm	38.3 mm	2 mm	38 x 44 mm		0460 38 44	25/100
45.9 mm	39.3 mm	2 mm	39 x 46 mm		0460 39 46	100
46.9 mm	40.3 mm	2 mm	40 x 47 mm		0460 40 47	25/100
47.9 mm	46.3 mm	1 mm	46 x 48 mm		0460 464 810	100
48.9 mm	42.3 mm	2 mm	42 x 49 mm		0460 42 49	25/100
51 mm	42 mm	2 mm	42 x 51 mm		0460 42 51	50
51.9 mm	45.3 mm	2 mm	45 x 52 mm		0460 45 52	25
54.9 mm	48.3 mm	2 mm	48 x 55 mm		0460 48 55	25
59.8 mm	52.5 mm	2.5 mm	52 x 60 mm		0460 5 60	100
63 mm	55 mm	2.5 mm	55 x 63 mm		0460 55 63	25
63.8 mm	56.5 mm	2.5 mm	56 x 65 mm		0460 56 65	50
67.8 mm	60.5 mm	2.5 mm	60 x 68 mm		0460 60 68	100
83.8 mm	75.5 mm	2.5 mm	75 x 84 mm		0460 75 84	25
87.8 mm	78.5 mm	2.5 mm	78 x 88 mm		0460 78 88	50
89.8 mm	80.7 mm	2.5 mm	80 x 90 mm		0460 80 90	50
99.8 mm	90.7 mm	2.5 mm	90 x 100 mm		0460 90 100	50
190 mm	180 mm	1.5 mm	180 x 190 mm		0460 180 190	50