

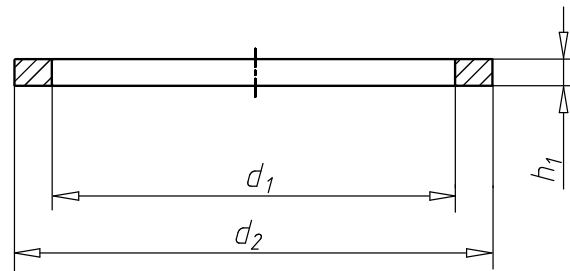
## Sealing ring, aluminium, shape A

### Shape A

- An aluminium ring can be used anywhere (except in the presence of some strong acids) due to its corrosion resistance.
- Via special preheating, the metal ring's structure softens further so that, when under pressure, it can embed itself into all the uneven areas of the parts to be screwed together.



Material	Aluminium
Surface	Plain



RoHS-compliant	Form	Nominal size	Internal diameter (d <sub>1</sub> )	Outer diameter (d <sub>2</sub> )	Thickness (h <sub>1</sub> )	Corresponds to original spare part number	Max. temperature resistance	Art. no.	P. Qty.
			38 mm					<b>0463 38 44</b>	100
			40 mm					<b>0463 40 47</b>	100
			64 mm					<b>0463 64 72</b>	100
	A	5 x 9 mm	5 mm	9 mm	1 mm	VW/Audi: N.013 802.3	200 °C	<b>0463 5 9</b>	100
	A	6 x 10 mm	6 mm	10 mm	1 mm		200 °C	<b>0463 6 10</b>	100
	A	6 x 12 mm	6 mm	12 mm	1 mm		200 °C	<b>0463 6 12</b>	100
	A	8 x 11.5 mm	8.2 mm	11.4 mm				<b>0463 8 115</b>	1000
	A	8 x 12 mm	8 mm	12 mm	1 mm		200 °C	<b>0463 8 12</b>	100/500
	A	8 x 14 mm	8 mm	14 mm	1 mm		200 °C	<b>0463 8 14</b>	100
	A	8 x 14 mm	8 mm	14 mm	1.5 mm		200 °C	<b>0463 8 149</b>	100
	A	8 x 15 mm	8.5 mm	15 mm			200 °C	<b>0463 8 15</b>	100
	A	10 x 14 mm	10 mm	14 mm	1 mm		200 °C	<b>0463 10 14</b>	100/500 /1000
	A	10 x 16 mm	10 mm	16 mm	1 mm		200 °C	<b>0463 10 16</b>	100/500
	A	12 x 16 mm	12 mm	16 mm	1.5 mm	VW/Audi: N.013 818.3	200 °C	<b>0463 12 16</b>	100/500 /2000
	A	12 x 18 mm	12 mm	18 mm	1.5 mm		200 °C	<b>0463 12 18</b>	100/500 /1000
	A	12 x 19 mm	12 mm	19 mm	1.5 mm		200 °C	<b>0463 12 19</b>	100
	A	14 x 18 mm	14 mm	18 mm	1.5 mm		200 °C	<b>0463 14 18</b>	100/500 /5000

RoHS-compliant	Form	Nominal size	Internal diameter (d <sub>1</sub> )	Outer diameter (d <sub>2</sub> )	Thickness (h <sub>1</sub> )	Corresponds to original spare part number	Max. temperature resistance	Art. no.	P. Qty.
	A	14 x 20 mm	14 mm	20 mm	1.5 mm		200 °C	<b>0463 14 20</b>	100/500
	A	14 x 22 mm	14 mm	22 mm	1.5 mm		200 °C	<b>0463 14 22</b>	100
	A	14 x 24 mm	14.2 mm	23.9 mm	1.5 mm		200 °C	<b>0463 14 24</b>	100
	A	16 x 20 mm	16 mm	20 mm	1.5 mm		200 °C	<b>0463 16 20</b>	100/1000
	A	16 x 22 mm	16 mm	22 mm	1.5 mm		200 °C	<b>0463 16 22</b>	100/500
	A	17 x 21 mm	17.2 mm	20.9 mm				<b>0463 17 21</b>	100
	A	18 x 22 mm	18 mm	22 mm	1.5 mm		200 °C	<b>0463 18 22</b>	50/100
	A	18 x 24 mm	18 mm	24 mm	1.5 mm		200 °C	<b>0463 18 24</b>	50/100 /500
	A	18 x 26 mm	18.2 mm	25.9 mm				<b>0463 18 26</b>	100
	A	20 x 24 mm	20.2 mm	23.9 mm	1.5 mm		200 °C	<b>0463 20 24</b>	50/500
	A	20 x 26 mm	20 mm	26 mm	1.5 mm		200 °C	<b>0463 20 26</b>	50/100
	A	21 x 26 mm	21.2 mm	25.9 mm	1.5 mm			<b>0463 21 26</b>	100
	A	21 x 28 mm	21.2 mm	27.9 mm	1.5 mm		200 °C	<b>0463 21 28</b>	1000
	A	22 x 27 mm	22 mm	27 mm	1.5 mm		200 °C	<b>0463 22 27</b>	50/100 /2500
	A	22 x 29 mm	22 mm	29 mm	1.5 mm		200 °C	<b>0463 22 29</b>	50
	A	23 x 28 mm	23.3 mm	27.9 mm	1.5 mm			<b>0463 23 28</b>	100
	A	24 x 29 mm	24.3 mm	28.9 mm	2 mm			<b>0463 24 29</b>	200
	A	24 x 30 mm	24 mm	30 mm	2 mm		200 °C	<b>0463 24 30</b>	50/100
	A	24 x 32 mm	24 mm	32 mm	2 mm		200 °C	<b>0463 24 32</b>	50/100
	A	26 x 32 mm	26 mm	32 mm	2 mm		200 °C	<b>0463 26 32</b>	50/100 /500
	A	27 x 32 mm	27 mm	32 mm	2 mm		200 °C	<b>0463 27 32</b>	100
	A	28 x 34 mm	28 mm	34 mm	2 mm		200 °C	<b>0463 28 34</b>	100
	A	30 x 36 mm	30 mm	36 mm	2 mm		200 °C	<b>0463 30 36</b>	50/100
	A	32 x 38 mm	32 mm	38 mm	2 mm		200 °C	<b>0463 32 38</b>	50
	A	33 x 39 mm	33 mm	39 mm	2 mm		200 °C	<b>0463 33 39</b>	100
	A	36 x 31 mm	26.3 mm	30.9 mm				<b>0463 26 31</b>	500
	A	36 x 42 mm	36.3 mm	41.9 mm				<b>0463 36 42</b>	100
	A	42 x 49 mm	42.3 mm	48.9 mm	2 mm		200 °C	<b>0463 42 49</b>	100
	A	45 x 52 mm	45.3 mm	51.9 mm	2 mm		200 °C	<b>0463 45 52</b>	100
	A	48 x 55 mm	48.3 mm	54.9 mm	2 mm			<b>0463 48 55</b>	100
	A	60 x 68 mm	60.5 mm	67.8 mm				<b>0463 60 68</b>	25
Yes	A	10 x 13.5 mm	10.2 mm	13.4 mm	1 mm			<b>0463 10 135</b>	5000
Yes	A	12 x 15.5 mm	12.2 mm	15.4 mm	1.5 mm			<b>0463 12 155</b>	500

## Notice

When using the sealing rings, you should be aware that the dimensions are specified in the inner and outer diameter – if the space is tight, the inner diameter is decisive, as a 10x12 washer can be replaced with a 10x14 or even a 10x16 washer, for example.