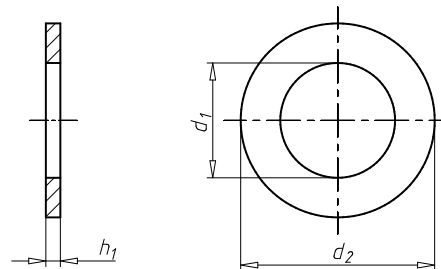


## Flat washer for hexagon bolts and nuts

### DIN 125 stainless steel, A4

Standards	DIN 125
Material	Stainless steel A4
Vickers hardness, HV	140 HV
Surface	Plain
RoHS-compliant	Yes



Suitable for screw thread	Form	Internal diameter (d <sub>1</sub> )	Outer diameter (d <sub>2</sub> )	Thickness (h <sub>1</sub> )	Art. no.	P. Qty.
M2.3	A	2.5 mm	6 mm	0.5 mm	<b>0412 23</b>	1000
M2.5	A	2.7 mm	6 mm	0.5 mm	<b>0412 25</b>	2000
M3	A	3.2 mm	7 mm	0.5 mm	<b>0412 3</b>	100/2000
M3	B	3.2 mm	7 mm	0.5 mm	<b>0412 900 3</b>	1000
M4	A	4.3 mm	9 mm	0.8 mm	<b>0412 4</b>	100/500 /1000
M4	B	4.3 mm	9 mm	0.8 mm	<b>0412 900 4</b>	2000
M5	A	5.3 mm	10 mm	1 mm	<b>0412 5</b>	100/1000
M5	B	5.3 mm	10 mm	1 mm	<b>0412 900 5</b>	200
M6	A	6.4 mm	12 mm	1.6 mm	<b>0412 6</b>	100/1000
M6	B	6.4 mm	12 mm	1.6 mm	<b>0412 900 6</b>	1000
M8	A	8.4 mm	16 mm	1.6 mm	<b>0412 8</b>	100/500 /1000
M8	B	8.4 mm	16 mm	1.6 mm	<b>0412 900 8</b>	500
M10	A	10.5 mm	20 mm	2 mm	<b>0412 10</b>	100/1000
M10	B	10.5 mm	20 mm	2 mm	<b>0412 900 10</b>	1000
M12	A	13 mm	24 mm	2.5 mm	<b>0412 12</b>	50/100 /200
M12	B	13 mm	24 mm	2.5 mm	<b>0412 900 12</b>	200/500
M14	A	15 mm	28 mm	2.5 mm	<b>0412 14</b>	50/200
M14	B	15 mm	28 mm	2.5 mm	<b>0412 900 14</b>	100

Suitable for screw thread	Form	Internal diameter (d <sub>1</sub> )	Outer diameter (d <sub>2</sub> )	Thickness (h <sub>1</sub> )	Art. no.	P. Qty.
M16	A	17 mm	30 mm	3 mm	<b>0412 16</b>	50/100 /200
M16	B	17 mm	30 mm	3 mm	<b>0412 900 16</b>	200
M18	A	19 mm	34 mm	3 mm	<b>0412 18</b>	200
M18	B	19 mm	34 mm	3 mm	<b>0412 900 18</b>	100
M20	A	21 mm	37 mm	3 mm	<b>0412 20</b>	50/100
M20	B	21 mm	37 mm	3 mm	<b>0412 900 20</b>	100
M22	A	23 mm	39 mm	3 mm	<b>0412 22</b>	100
M24	A	25 mm	44 mm	4 mm	<b>0412 24</b>	50/100
M24	B	25 mm	44 mm	4 mm	<b>0412 900 24</b>	50
M26	A	27 mm	50 mm	4 mm	<b>0412 26</b>	50
M27	A	28 mm	50 mm	4 mm	<b>0412 27</b>	50
M27	B	28 mm	50 mm	4 mm	<b>0412 900 27</b>	25
M30	A	31 mm	56 mm	4 mm	<b>0412 30</b>	50
M30	B	31 mm	56 mm	4 mm	<b>0412 900 30</b>	25
M33	A	34 mm	60 mm	5 mm	<b>0412 33</b>	25
M36	A	37 mm	66 mm	5 mm	<b>0412 36</b>	50
M39	A	40 mm	72 mm	6 mm	<b>0412 39</b>	10
M45	A	46 mm	85 mm	7 mm	<b>0412 45</b>	10
M48	A	50 mm	92 mm	8 mm	<b>0412 48</b>	10
M52	A	54 mm	98 mm	8 mm	<b>0412 52</b>	10
M56	A	58 mm	105 mm	9 mm	<b>0412 56</b>	20