

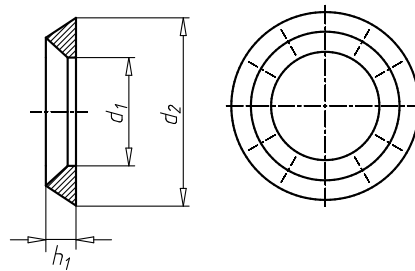
## Rosette

**Brass, MS 63 F 30, black burnished**

**Rosettes are used as spacers for various countersunk screws. They are used as washers and alignment aids, as well as to equalise the pressure on the parts that need to be secured, particularly if soft materials such as wood, plastic, leather, etc. are used.**



Material	Brass
Surface	Burnished
RoHS-compliant	Yes



Internal diameter ( $d_1$ )	Outer diameter ( $d_2$ )	Height ( $h_1$ )	Art. no.	P. Qty.
4.8 mm	12.7 mm	2.7 mm	<b>0458 412 5</b>	100/1000
5 mm	11 mm	2.4 mm	<b>0458 411 5</b>	100
6 mm	13 mm	3 mm	<b>0458 413 6</b>	100

Compatible with ORSY® storage system