

## Countersunk head screw with hexagon socket

### ISO 10642 A2-070 stainless steel, plain

- Due to their head geometry, countersunk head screws have a limited load capacity according to this standard and possibly do not meet tensile or torsional strength requirements.
- The actual mechanical properties of the screw are unchanged and comply with ISO 3506-1
- Depending on the type, these items are supplied with threading almost up to the head
- Countersinks for screw heads in accordance with DIN 7991 and ISO 10642 must comply with DIN 74 shape F

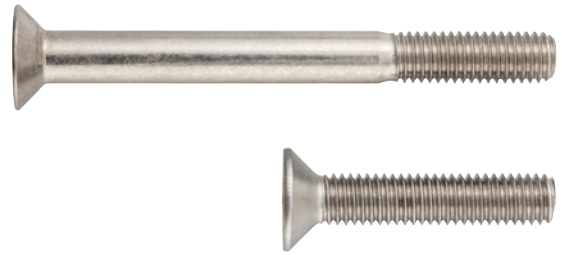
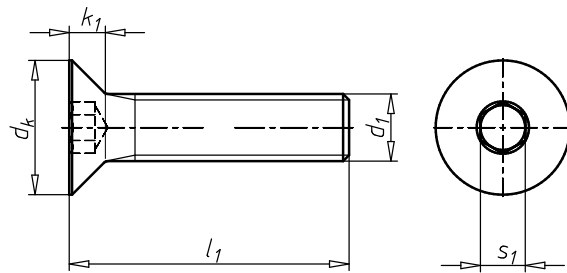


Illustration only



|                |                        |
|----------------|------------------------|
| Material       | Stainless steel A2     |
| Property class | 070                    |
| Surface        | Plain                  |
| RoHS-compliant | Yes                    |
| Head type      | Countersunk head       |
| Drive type     | Hexagon socket         |
| Thread type    | Metric thread          |
| Thread format  | Standard metric thread |
| Product class  | A                      |



| Thread type x nominal diameter (d <sub>1</sub> ) | Length (l <sub>1</sub> ) | Head diameter (d <sub>k</sub> ) | Head height (k <sub>1</sub> ) | Internal drive (s <sub>1</sub> ) | Standards | Art. no.          | P. Qty. |
|--|--------------------------|---------------------------------|-------------------------------|----------------------------------|-----------|-------------------|---------|
| M2.5   | 6 mm                     | 5.08 mm                         | 1.69 mm                       | HS1.5                            | ISO 10642 | <b>0100 25 6</b>  | 5000    |
| M2.5   | 8 mm                     | 5.08 mm                         | 1.69 mm                       | HS1.5                            | ISO 10642 | <b>0100 25 8</b>  | 1000    |
| M2.5   | 12 mm                    | 5.08 mm                         | 1.69 mm                       | HS1.5                            | ISO 10642 | <b>0100 25 12</b> | 1000    |
| M2.5   | 18 mm                    | 5.08 mm                         | 1.69 mm                       | HS1.5                            | DIN 7991  | <b>0100 25 18</b> | 500     |
| M3   | 5 mm                     | 5.81 mm                         | 1.86 mm                       | HS2                              | ISO 10642 | <b>0100 3 5</b>   | 1000    |
| M3   | 6 mm                     | 5.81 mm                         | 1.86 mm                       | HS2                              | ISO 10642 | <b>0100 3 6</b>   | 1000    |
| M3   | 8 mm                     | 5.81 mm                         | 1.86 mm                       | HS2                              | ISO 10642 | <b>0100 3 8</b>   | 1000    |
| M3   | 10 mm                    | 5.81 mm                         | 1.86 mm                       | HS2                              | ISO 10642 | <b>0100 3 10</b>  | 1000    |
| M3   | 12 mm                    | 5.81 mm                         | 1.86 mm                       | HS2                              | ISO 10642 | <b>0100 3 12</b>  | 1000    |
| M3   | 14 mm                    | 5.81 mm                         | 1.86 mm                       | HS2                              | ISO 10642 | <b>0100 3 14</b>  | 1000    |
| M3   | 16 mm                    | 5.81 mm                         | 1.86 mm                       | HS2                              | ISO 10642 | <b>0100 3 16</b>  | 1000    |
| M3   | 18 mm                    | 5.81 mm                         | 1.86 mm                       | HS2                              | ISO 10642 | <b>0100 3 18</b>  | 1000    |
| M3   | 20 mm                    | 5.81 mm                         | 1.86 mm                       | HS2                              | ISO 10642 | <b>0100 3 20</b>  | 1000    |
| M3   | 25 mm                    | 5.81 mm                         | 1.86 mm                       | HS2                              | ISO 10642 | <b>0100 3 25</b>  | 500     |
| M3   | 30 mm                    | 5.81 mm                         | 1.86 mm                       | HS2                              | ISO 10642 | <b>0100 3 30</b>  | 500     |
| M3   | 35 mm                    | 5.81 mm                         | 1.86 mm                       | HS2                              | ISO 10642 | <b>0100 3 35</b>  | 500     |
| M3   | 40 mm                    | 5.81 mm                         | 1.86 mm                       | HS2                              | ISO 10642 | <b>0100 3 40</b>  | 500     |
| M3   | 45 mm                    | 5.81 mm                         | 1.86 mm                       | HS2                              | ISO 10642 | <b>0100 3 45</b>  | 500     |
| M3   | 50 mm                    | 5.81 mm                         | 1.86 mm                       | HS2                              | ISO 10642 | <b>0100 3 50</b>  | 500     |
| M4   | 6 mm                     | 7.96 mm                         | 2.48 mm                       | HS2.5                            | ISO 10642 | <b>0100 4 6</b>   | 1000    |
| M4   | 8 mm                     | 7.96 mm                         | 2.48 mm                       | HS2.5                            | ISO 10642 | <b>0100 4 8</b>   | 100     |
| M4   | 10 mm                    | 7.96 mm                         | 2.48 mm                       | HS2.5                            | ISO 10642 | <b>0100 4 10</b>  | 100     |
| M4   | 12 mm                    | 7.96 mm                         | 2.48 mm                       | HS2.5                            | ISO 10642 | <b>0100 4 12</b>  | 100     |

| Thread type x nominal diameter (d <sub>1</sub> ) | Length (l <sub>1</sub> ) | Head diameter (d <sub>k</sub> ) | Head height (k <sub>1</sub> ) | Internal drive (s <sub>1</sub> ) | Standards | Art. no.          | P. Qty. |
|--|--------------------------|---------------------------------|-------------------------------|----------------------------------|-----------|-------------------|---------|
| M4   | 14 mm                    | 7.96 mm                         | 2.48 mm                       | HS2.5                            | ISO 10642 | <b>0100 4 14</b>  | 100     |
| M4   | 16 mm                    | 7.96 mm                         | 2.48 mm                       | HS2.5                            | ISO 10642 | <b>0100 4 16</b>  | 100     |
| M4   | 18 mm                    | 7.96 mm                         | 2.48 mm                       | HS2.5                            | ISO 10642 | <b>0100 4 18</b>  | 500     |
| M4   | 20 mm                    | 7.96 mm                         | 2.48 mm                       | HS2.5                            | ISO 10642 | <b>0100 4 20</b>  | 100     |
| M4   | 25 mm                    | 7.96 mm                         | 2.48 mm                       | HS2.5                            | ISO 10642 | <b>0100 4 25</b>  | 100     |
| M4   | 30 mm                    | 7.96 mm                         | 2.48 mm                       | HS2.5                            | ISO 10642 | <b>0100 4 30</b>  | 100     |
| M4   | 35 mm                    | 7.96 mm                         | 2.48 mm                       | HS2.5                            | ISO 10642 | <b>0100 4 35</b>  | 500     |
| M4   | 40 mm                    | 7.96 mm                         | 2.48 mm                       | HS2.5                            | ISO 10642 | <b>0100 4 40</b>  | 500     |
| M4   | 45 mm                    | 7.96 mm                         | 2.48 mm                       | HS2.5                            | ISO 10642 | <b>0100 4 45</b>  | 500     |
| M4   | 50 mm                    | 7.96 mm                         | 2.48 mm                       | HS2.5                            | ISO 10642 | <b>0100 4 50</b>  | 500     |
| M4   | 60 mm                    | 7.96 mm                         | 2.48 mm                       | HS2.5                            | ISO 10642 | <b>0100 4 60</b>  | 500     |
| M5   | 6 mm                     | 10.07 mm                        | 3.1 mm                        | HS3                              | ISO 10642 | <b>0100 5 6</b>   | 500     |
| M5   | 7 mm                     | 10.07 mm                        | 3.1 mm                        | HS3                              | ISO 10642 | <b>0100 5 7</b>   | 200     |
| M5   | 8 mm                     | 10.07 mm                        | 3.1 mm                        | HS3                              | ISO 10642 | <b>0100 5 8</b>   | 500     |
| M5   | 10 mm                    | 10.07 mm                        | 3.1 mm                        | HS3                              | ISO 10642 | <b>0100 5 10</b>  | 100     |
| M5   | 12 mm                    | 10.07 mm                        | 3.1 mm                        | HS3                              | ISO 10642 | <b>0100 5 12</b>  | 100     |
| M5   | 14 mm                    | 10.07 mm                        | 3.1 mm                        | HS3                              | ISO 10642 | <b>0100 5 14</b>  | 100     |
| M5   | 16 mm                    | 10.07 mm                        | 3.1 mm                        | HS3                              | ISO 10642 | <b>0100 5 16</b>  | 100     |
| M5   | 18 mm                    | 10.07 mm                        | 3.1 mm                        | HS3                              | ISO 10642 | <b>0100 5 18</b>  | 500     |
| M5   | 20 mm                    | 10.07 mm                        | 3.1 mm                        | HS3                              | ISO 10642 | <b>0100 5 20</b>  | 100     |
| M5   | 22 mm                    | 10.07 mm                        | 3.1 mm                        | HS3                              | ISO 10642 | <b>0100 5 22</b>  | 500     |
| M5   | 25 mm                    | 10.07 mm                        | 3.1 mm                        | HS3                              | ISO 10642 | <b>0100 5 25</b>  | 100     |
| M5   | 30 mm                    | 10.07 mm                        | 3.1 mm                        | HS3                              | ISO 10642 | <b>0100 5 30</b>  | 100     |
| M5   | 35 mm                    | 10.07 mm                        | 3.1 mm                        | HS3                              | ISO 10642 | <b>0100 5 35</b>  | 100     |
| M5   | 40 mm                    | 10.07 mm                        | 3.1 mm                        | HS3                              | ISO 10642 | <b>0100 5 40</b>  | 100     |
| M5   | 45 mm                    | 10.07 mm                        | 3.1 mm                        | HS3                              | ISO 10642 | <b>0100 5 45</b>  | 200     |
| M5   | 50 mm                    | 10.07 mm                        | 3.1 mm                        | HS3                              | ISO 10642 | <b>0100 5 50</b>  | 200     |
| M5   | 55 mm                    | 10.07 mm                        | 3.1 mm                        | HS3                              | ISO 10642 | <b>0100 5 55</b>  | 200     |
| M5   | 60 mm                    | 10.07 mm                        | 3.1 mm                        | HS3                              | ISO 10642 | <b>0100 5 60</b>  | 200     |
| M5   | 65 mm                    | 10.07 mm                        | 3.1 mm                        | HS3                              | ISO 10642 | <b>0100 5 65</b>  | 200     |
| M5   | 70 mm                    | 10.07 mm                        | 3.1 mm                        | HS3                              | ISO 10642 | <b>0100 5 70</b>  | 100     |
| M5   | 80 mm                    | 10.07 mm                        | 3.1 mm                        | HS3                              | ISO 10642 | <b>0100 5 80</b>  | 100     |
| M5   | 90 mm                    | 10.07 mm                        | 3.1 mm                        | HS3                              | ISO 10642 | <b>0100 5 90</b>  | 200     |
| M5   | 100 mm                   | 10.07 mm                        | 3.1 mm                        | HS3                              | ISO 10642 | <b>0100 5 100</b> | 200     |
| M5   | 105 mm                   | 10.07 mm                        | 3.1 mm                        | HS3                              | ISO 10642 | <b>0100 5 105</b> | 200     |
| M6   | 8 mm                     | 12.16 mm                        | 3.72 mm                       | HS4                              | ISO 10642 | <b>0100 6 8</b>   | 200     |
| M6   | 10 mm                    | 12.16 mm                        | 3.72 mm                       | HS4                              | ISO 10642 | <b>0100 6 10</b>  | 100/500 |
| M6   | 12 mm                    | 12.16 mm                        | 3.72 mm                       | HS4                              | ISO 10642 | <b>0100 6 12</b>  | 100     |
| M6   | 14 mm                    | 12.16 mm                        | 3.72 mm                       | HS4                              | ISO 10642 | <b>0100 6 14</b>  | 100/500 |
| M6   | 16 mm                    | 12.16 mm                        | 3.72 mm                       | HS4                              | ISO 10642 | <b>0100 6 16</b>  | 100     |
| M6   | 18 mm                    | 12.16 mm                        | 3.72 mm                       | HS4                              | ISO 10642 | <b>0100 6 18</b>  | 100     |
| M6   | 20 mm                    | 12.16 mm                        | 3.72 mm                       | HS4                              | ISO 10642 | <b>0100 6 20</b>  | 100     |
| M6   | 22 mm                    | 12.16 mm                        | 3.72 mm                       | HS4                              | ISO 10642 | <b>0100 6 22</b>  | 100     |
| M6   | 25 mm                    | 12.16 mm                        | 3.72 mm                       | HS4                              | ISO 10642 | <b>0100 6 25</b>  | 100     |
| M6   | 30 mm                    | 12.16 mm                        | 3.72 mm                       | HS4                              | ISO 10642 | <b>0100 6 30</b>  | 100     |
| M6   | 35 mm                    | 12.16 mm                        | 3.72 mm                       | HS4                              | ISO 10642 | <b>0100 6 35</b>  | 100     |
| M6   | 40 mm                    | 12.16 mm                        | 3.72 mm                       | HS4                              | ISO 10642 | <b>0100 6 40</b>  | 100     |
| M6   | 45 mm                    | 12.16 mm                        | 3.72 mm                       | HS4                              | ISO 10642 | <b>0100 6 45</b>  | 100     |
| M6   | 50 mm                    | 12.16 mm                        | 3.72 mm                       | HS4                              | ISO 10642 | <b>0100 6 50</b>  | 100     |
| M6   | 55 mm                    | 12.16 mm                        | 3.72 mm                       | HS4                              | ISO 10642 | <b>0100 6 55</b>  | 100     |
| M6   | 60 mm                    | 12.16 mm                        | 3.72 mm                       | HS4                              | ISO 10642 | <b>0100 6 60</b>  | 100     |
| M6   | 65 mm                    | 12.16 mm                        | 3.72 mm                       | HS4                              | ISO 10642 | <b>0100 6 65</b>  | 100     |
| M6   | 70 mm                    | 12.16 mm                        | 3.72 mm                       | HS4                              | ISO 10642 | <b>0100 6 70</b>  | 100     |

| Thread type x nominal diameter (d <sub>1</sub> ) | Length (l <sub>1</sub> ) | Head diameter (d <sub>k</sub> ) | Head height (k <sub>1</sub> ) | Internal drive (s <sub>1</sub> ) | Standards | Art. no.           | P. Qty. |
|--|--------------------------|---------------------------------|-------------------------------|----------------------------------|-----------|--------------------|---------|
| M6   | 75 mm                    | 12.16 mm                        | 3.72 mm                       | HS4                              | ISO 10642 | <b>0100 6 75</b>   | 100     |
| M6   | 80 mm                    | 12.16 mm                        | 3.72 mm                       | HS4                              | ISO 10642 | <b>0100 6 80</b>   | 100     |
| M6   | 90 mm                    | 12.16 mm                        | 3.72 mm                       | HS4                              | ISO 10642 | <b>0100 6 90</b>   | 100     |
| M6   | 100 mm                   | 12.16 mm                        | 3.72 mm                       | HS4                              | ISO 10642 | <b>0100 6 100</b>  | 100     |
| M8   | 10 mm                    | 16.43 mm                        | 4.96 mm                       | HS5                              | ISO 10642 | <b>0100 8 10</b>   | 500     |
| M8   | 12 mm                    | 16.43 mm                        | 4.96 mm                       | HS5                              | ISO 10642 | <b>0100 8 12</b>   | 100     |
| M8   | 14 mm                    | 16.43 mm                        | 4.96 mm                       | HS5                              | ISO 10642 | <b>0100 8 14</b>   | 100     |
| M8   | 16 mm                    | 16.43 mm                        | 4.96 mm                       | HS5                              | ISO 10642 | <b>0100 8 16</b>   | 100     |
| M8   | 18 mm                    | 16.43 mm                        | 4.96 mm                       | HS5                              | ISO 10642 | <b>0100 8 18</b>   | 100     |
| M8   | 20 mm                    | 16.43 mm                        | 4.96 mm                       | HS5                              | ISO 10642 | <b>0100 8 20</b>   | 100/200 |
| M8   | 22 mm                    | 16.43 mm                        | 4.96 mm                       | HS5                              | ISO 10642 | <b>0100 8 22</b>   | 200     |
| M8   | 25 mm                    | 16.43 mm                        | 4.96 mm                       | HS5                              | ISO 10642 | <b>0100 8 25</b>   | 100     |
| M8   | 30 mm                    | 16.43 mm                        | 4.96 mm                       | HS5                              | ISO 10642 | <b>0100 8 30</b>   | 100     |
| M8   | 35 mm                    | 16.43 mm                        | 4.96 mm                       | HS5                              | ISO 10642 | <b>0100 8 35</b>   | 100     |
| M8   | 40 mm                    | 16.43 mm                        | 4.96 mm                       | HS5                              | ISO 10642 | <b>0100 8 40</b>   | 100     |
| M8   | 45 mm                    | 16.43 mm                        | 4.96 mm                       | HS5                              | ISO 10642 | <b>0100 8 45</b>   | 100     |
| M8   | 50 mm                    | 16.43 mm                        | 4.96 mm                       | HS5                              | ISO 10642 | <b>0100 8 50</b>   | 100     |
| M8   | 55 mm                    | 16.43 mm                        | 4.96 mm                       | HS5                              | ISO 10642 | <b>0100 8 55</b>   | 100     |
| M8   | 60 mm                    | 16.43 mm                        | 4.96 mm                       | HS5                              | ISO 10642 | <b>0100 8 60</b>   | 100     |
| M8   | 65 mm                    | 16.43 mm                        | 4.96 mm                       | HS5                              | ISO 10642 | <b>0100 8 65</b>   | 100     |
| M8   | 70 mm                    | 16.43 mm                        | 4.96 mm                       | HS5                              | ISO 10642 | <b>0100 8 70</b>   | 100     |
| M8   | 75 mm                    | 16.43 mm                        | 4.96 mm                       | HS5                              | ISO 10642 | <b>0100 8 8</b>    | 100     |
| M8   | 75 mm                    | 16.43 mm                        | 4.96 mm                       | HS5                              | ISO 10642 | <b>0100 8 75</b>   | 100     |
| M8   | 80 mm                    | 16.43 mm                        | 4.96 mm                       | HS5                              | ISO 10642 | <b>0100 8 80</b>   | 100     |
| M8   | 85 mm                    | 16.43 mm                        | 4.96 mm                       | HS5                              | ISO 10642 | <b>0100 8 85</b>   | 100     |
| M8   | 90 mm                    | 16.43 mm                        | 4.96 mm                       | HS5                              | ISO 10642 | <b>0100 8 90</b>   | 100     |
| M8   | 100 mm                   | 16.43 mm                        | 4.96 mm                       | HS5                              | ISO 10642 | <b>0100 8 100</b>  | 100     |
| M8   | 110 mm                   | 16.43 mm                        | 4.96 mm                       | HS5                              | ISO 10642 | <b>0100 8 110</b>  | 50      |
| M8   | 120 mm                   | 16.43 mm                        | 4.96 mm                       | HS5                              | ISO 10642 | <b>0100 8 120</b>  | 100     |
| M8   | 130 mm                   | 16.43 mm                        | 4.96 mm                       | HS5                              | ISO 10642 | <b>0100 8 130</b>  | 50      |
| M8   | 140 mm                   | 16.43 mm                        | 4.96 mm                       | HS5                              | ISO 10642 | <b>0100 8 140</b>  | 100     |
| M10  | 12 mm                    | 20.69 mm                        | 6.2 mm                        | HS6                              | ISO 10642 | <b>0100 10 12</b>  | 50      |
| M10  | 16 mm                    | 20.69 mm                        | 6.2 mm                        | HS6                              | ISO 10642 | <b>0100 10 16</b>  | 100     |
| M10  | 20 mm                    | 20.69 mm                        | 6.2 mm                        | HS6                              | ISO 10642 | <b>0100 10 20</b>  | 100     |
| M10  | 25 mm                    | 20.69 mm                        | 6.2 mm                        | HS6                              | ISO 10642 | <b>0100 10 25</b>  | 100     |
| M10  | 30 mm                    | 20.69 mm                        | 6.2 mm                        | HS6                              | ISO 10642 | <b>0100 10 30</b>  | 100     |
| M10  | 35 mm                    | 20.69 mm                        | 6.2 mm                        | HS6                              | ISO 10642 | <b>0100 10 35</b>  | 100     |
| M10  | 40 mm                    | 20.69 mm                        | 6.2 mm                        | HS6                              | ISO 10642 | <b>0100 10 40</b>  | 100     |
| M10  | 45 mm                    | 20.69 mm                        | 6.2 mm                        | HS6                              | ISO 10642 | <b>0100 10 45</b>  | 100     |
| M10  | 50 mm                    | 20.69 mm                        | 6.2 mm                        | HS6                              | ISO 10642 | <b>0100 10 50</b>  | 100     |
| M10  | 55 mm                    | 20.69 mm                        | 6.2 mm                        | HS6                              | ISO 10642 | <b>0100 10 55</b>  | 100     |
| M10  | 60 mm                    | 20.69 mm                        | 6.2 mm                        | HS6                              | ISO 10642 | <b>0100 10 60</b>  | 100     |
| M10  | 65 mm                    | 20.69 mm                        | 6.2 mm                        | HS6                              | ISO 10642 | <b>0100 10 65</b>  | 50      |
| M10  | 70 mm                    | 20.69 mm                        | 6.2 mm                        | HS6                              | ISO 10642 | <b>0100 10 70</b>  | 50      |
| M10  | 75 mm                    | 20.69 mm                        | 6.2 mm                        | HS6                              | ISO 10642 | <b>0100 10 75</b>  | 100     |
| M10  | 80 mm                    | 20.69 mm                        | 6.2 mm                        | HS6                              | ISO 10642 | <b>0100 10 80</b>  | 50      |
| M10  | 90 mm                    | 20.69 mm                        | 6.2 mm                        | HS6                              | ISO 10642 | <b>0100 10 90</b>  | 50      |
| M10  | 100 mm                   | 20.69 mm                        | 6.2 mm                        | HS6                              | ISO 10642 | <b>0100 10 100</b> | 50      |
| M10  | 110 mm                   | 20.69 mm                        | 6.2 mm                        | HS6                              | ISO 10642 | <b>0100 10 110</b> | 50      |
| M10  | 120 mm                   | 20.69 mm                        | 6.2 mm                        | HS6                              | ISO 10642 | <b>0100 10 120</b> | 50      |
| M10  | 130 mm                   | 20.69 mm                        | 6.2 mm                        | HS6                              | ISO 10642 | <b>0100 10 130</b> | 50      |
| M10  | 140 mm                   | 20.69 mm                        | 6.2 mm                        | HS6                              | ISO 10642 | <b>0100 10 140</b> | 50      |
| M10  | 150 mm                   | 20.69 mm                        | 6.2 mm                        | HS6                              | ISO 10642 | <b>0100 10 150</b> | 20      |

| Thread type x nominal diameter (d <sub>1</sub> ) | Length (l <sub>1</sub> ) | Head diameter (d <sub>k</sub> ) | Head height (k <sub>1</sub> ) | Internal drive (s <sub>1</sub> ) | Standards | Art. no.           | P. Qty. |
|--|--------------------------|---------------------------------|-------------------------------|----------------------------------|-----------|--------------------|---------|
| M10  | 160 mm                   | 20.69 mm                        | 6.2 mm                        | HS6                              | ISO 10642 | <b>0100 10 160</b> | 1       |
| M10  | 180 mm                   | 20.69 mm                        | 6.2 mm                        | HS6                              | ISO 10642 | <b>0100 10 180</b> | 1       |
| M12  | 20 mm                    | 24.81 mm                        | 7.44 mm                       | HS8                              | ISO 10642 | <b>0100 12 20</b>  | 50      |
| M12  | 25 mm                    | 24.81 mm                        | 7.44 mm                       | HS8                              | ISO 10642 | <b>0100 12 25</b>  | 50      |
| M12  | 30 mm                    | 24.81 mm                        | 7.44 mm                       | HS8                              | ISO 10642 | <b>0100 12 30</b>  | 50      |
| M12  | 35 mm                    | 24.81 mm                        | 7.44 mm                       | HS8                              | ISO 10642 | <b>0100 12 35</b>  | 50      |
| M12  | 40 mm                    | 24.81 mm                        | 7.44 mm                       | HS8                              | ISO 10642 | <b>0100 12 40</b>  | 50      |
| M12  | 45 mm                    | 24.81 mm                        | 7.44 mm                       | HS8                              | ISO 10642 | <b>0100 12 45</b>  | 50      |
| M12  | 50 mm                    | 24.81 mm                        | 7.44 mm                       | HS8                              | ISO 10642 | <b>0100 12 50</b>  | 50      |
| M12  | 55 mm                    | 24.81 mm                        | 7.44 mm                       | HS8                              | ISO 10642 | <b>0100 12 55</b>  | 50      |
| M12  | 60 mm                    | 24.81 mm                        | 7.44 mm                       | HS8                              | ISO 10642 | <b>0100 12 60</b>  | 50      |
| M12  | 65 mm                    | 24.81 mm                        | 7.44 mm                       | HS8                              | ISO 10642 | <b>0100 12 65</b>  | 50      |
| M12  | 70 mm                    | 24.81 mm                        | 7.44 mm                       | HS8                              | ISO 10642 | <b>0100 12 70</b>  | 50      |
| M12  | 75 mm                    | 24.81 mm                        | 7.44 mm                       | HS8                              | ISO 10642 | <b>0100 12 75</b>  | 50      |
| M12  | 80 mm                    | 24.81 mm                        | 7.44 mm                       | HS8                              | ISO 10642 | <b>0100 12 80</b>  | 50      |
| M12  | 90 mm                    | 24.81 mm                        | 7.44 mm                       | HS8                              | ISO 10642 | <b>0100 12 90</b>  | 50      |
| M12  | 100 mm                   | 24.81 mm                        | 7.44 mm                       | HS8                              | ISO 10642 | <b>0100 12 100</b> | 50      |
| M12  | 160 mm                   | 24.81 mm                        | 7.44 mm                       | HS8                              | ISO 10642 | <b>0100 12 160</b> | 50      |
| M12  | 180 mm                   | 24.81 mm                        | 7.44 mm                       | HS8                              | ISO 10642 | <b>0100 12 180</b> | 10      |
| M14  | 50 mm                    | 28.31 mm                        | 8.4 mm                        | HS10                             | ISO 10642 | <b>0100 14 50</b>  | 25      |
| M16  | 25 mm                    | 30.61 mm                        | 8.8 mm                        | HS10                             | ISO 10642 | <b>0100 16 25</b>  | 25      |
| M16  | 30 mm                    | 30.61 mm                        | 8.8 mm                        | HS10                             | ISO 10642 | <b>0100 16 30</b>  | 50      |
| M16  | 35 mm                    | 30.61 mm                        | 8.8 mm                        | HS10                             | ISO 10642 | <b>0100 16 35</b>  | 25      |
| M16  | 40 mm                    | 30.61 mm                        | 8.8 mm                        | HS10                             | ISO 10642 | <b>0100 16 40</b>  | 25/50   |
| M16  | 45 mm                    | 30.61 mm                        | 8.8 mm                        | HS10                             | ISO 10642 | <b>0100 16 45</b>  | 25      |
| M16  | 50 mm                    | 30.61 mm                        | 8.8 mm                        | HS10                             | ISO 10642 | <b>0100 16 50</b>  | 50      |
| M16  | 55 mm                    | 30.61 mm                        | 8.8 mm                        | HS10                             | ISO 10642 | <b>0100 16 55</b>  | 25      |
| M16  | 60 mm                    | 30.61 mm                        | 8.8 mm                        | HS10                             | ISO 10642 | <b>0100 16 60</b>  | 25      |
| M16  | 65 mm                    | 30.61 mm                        | 8.8 mm                        | HS10                             | ISO 10642 | <b>0100 16 65</b>  | 25      |
| M16  | 70 mm                    | 30.61 mm                        | 8.8 mm                        | HS10                             | ISO 10642 | <b>0100 16 70</b>  | 25      |
| M16  | 75 mm                    | 30.61 mm                        | 8.8 mm                        | HS10                             | ISO 10642 | <b>0100 16 75</b>  | 25      |
| M16  | 80 mm                    | 30.61 mm                        | 8.8 mm                        | HS10                             | ISO 10642 | <b>0100 16 80</b>  | 25      |
| M16  | 90 mm                    | 30.61 mm                        | 8.8 mm                        | HS10                             | ISO 10642 | <b>0100 16 90</b>  | 25      |
| M16  | 100 mm                   | 30.61 mm                        | 8.8 mm                        | HS10                             | ISO 10642 | <b>0100 16 100</b> | 25      |
| M16  | 110 mm                   | 30.61 mm                        | 8.8 mm                        | HS10                             | ISO 10642 | <b>0100 16 110</b> | 25      |
| M16  | 120 mm                   | 30.61 mm                        | 8.8 mm                        | HS10                             | ISO 10642 | <b>0100 16 120</b> | 25      |
| M16  | 130 mm                   | 30.61 mm                        | 8.8 mm                        | HS10                             | ISO 10642 | <b>0100 16 130</b> | 25      |
| M16  | 140 mm                   | 30.61 mm                        | 8.8 mm                        | HS10                             | ISO 10642 | <b>0100 16 140</b> | 25      |
| M16  | 150 mm                   | 30.61 mm                        | 8.8 mm                        | HS10                             | ISO 10642 | <b>0100 16 150</b> | 25      |
| M20  | 25 mm                    | 36.75 mm                        | 10.16 mm                      | HS12                             | ISO 10642 | <b>0100 20 25</b>  | 25      |
| M20  | 35 mm                    | 36.75 mm                        | 10.16 mm                      | HS12                             | ISO 10642 | <b>0100 20 35</b>  | 50      |
| M20  | 40 mm                    | 36.75 mm                        | 10.16 mm                      | HS12                             | ISO 10642 | <b>0100 20 40</b>  | 50      |
| M20  | 45 mm                    | 36.75 mm                        | 10.16 mm                      | HS12                             | ISO 10642 | <b>0100 20 45</b>  | 25      |
| M20  | 50 mm                    | 36.75 mm                        | 10.16 mm                      | HS12                             | ISO 10642 | <b>0100 20 50</b>  | 25      |
| M20  | 55 mm                    | 36.75 mm                        | 10.16 mm                      | HS12                             | ISO 10642 | <b>0100 20 55</b>  | 25      |
| M20  | 60 mm                    | 36.75 mm                        | 10.16 mm                      | HS12                             | ISO 10642 | <b>0100 20 60</b>  | 25      |
| M20  | 70 mm                    | 36.75 mm                        | 10.16 mm                      | HS12                             | ISO 10642 | <b>0100 20 70</b>  | 25      |
| M20  | 90 mm                    | 36.75 mm                        | 10.16 mm                      | HS12                             | ISO 10642 | <b>0100 20 90</b>  | 25      |
| M20  | 100 mm                   | 36.75 mm                        | 10.16 mm                      | HS12                             | ISO 10642 | <b>0100 20 100</b> | 25      |
| M20  | 130 mm                   | 36.75 mm                        | 10.16 mm                      | HS12                             | ISO 10642 | <b>0100 20 130</b> | 25      |
| M20  | 140 mm                   | 36.75 mm                        | 10.16 mm                      | HS12                             | ISO 10642 | <b>0100 20 140</b> | 25      |

### Notice

DIN 7991 has been withdrawn and replaced by ISO 10642. There is some limited similarity (some head heights and head diameters have been changed | nominal  $\varnothing$  M18, M22, M24 are omitted | Stainless steels removed | strength classes 10.9 and 12.9 added).

**These screws can only be subjected to limited loads due to their head geometry, see DIN EN ISO 3506-1**