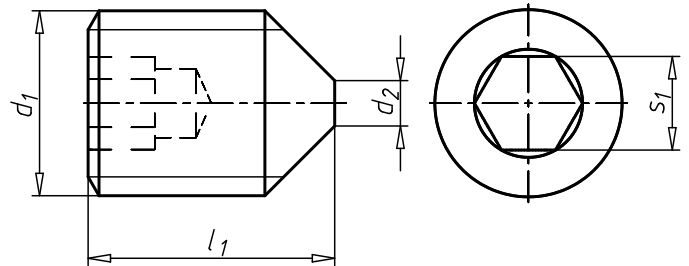


## Hexagon socket set screw with flattened tip

### ISO 4027, stainless steel A2 21H, plain

|                   |                    |
|-------------------|--------------------|
| Standards         | ISO 4027           |
| Material          | Stainless steel A2 |
| Hardness category | 21H                |
| Surface           | Plain              |
| Drive type        | Hexagon socket     |
| Shape of tip      | Tip                |
| RoHS-compliant    | Yes                |



| Thread type x nominal diameter (d <sub>1</sub> ) | Length (l <sub>1</sub> ) | Tip diameter (d <sub>2</sub> ) | Internal drive (s <sub>1</sub> ) | Angle of the tip | Art. no.          | P. Qty. |
|--|--------------------------|--------------------------------|----------------------------------|------------------|-------------------|---------|
| M2   | 2 mm                     | 0.5 mm                         | HS0.9                            | 120 Degree       | <b>0262 2 2</b>   | 1000    |
| M2   | 3 mm                     | 0.5 mm                         | HS0.9                            | 120 Degree       | <b>0262 2 3</b>   | 1000    |
| M2   | 4 mm                     | 0.5 mm                         | HS0.9                            | 90 Degree        | <b>0262 2 4</b>   | 1000    |
| M2   | 5 mm                     | 0.5 mm                         | HS0.9                            | 90 Degree        | <b>0262 2 5</b>   | 1000    |
| M2   | 6 mm                     | 0.5 mm                         | HS0.9                            | 90 Degree        | <b>0262 2 6</b>   | 1000    |
| M2   | 8 mm                     | 0.5 mm                         | HS0.9                            | 90 Degree        | <b>0262 2 8</b>   | 1000    |
| M2   | 10 mm                    | 0.5 mm                         | HS0.9                            | 90 Degree        | <b>0262 2 10</b>  | 1000    |
| M2.5   | 3 mm                     | 0.65 mm                        | HS1.3                            | 120 Degree       | <b>0262 25 3</b>  | 500     |
| M2.5   | 4 mm                     | 0.65 mm                        | HS1.3                            | 90 Degree        | <b>0262 25 4</b>  | 500     |
| M2.5   | 5 mm                     | 0.65 mm                        | HS1.3                            | 90 Degree        | <b>0262 25 5</b>  | 500     |
| M2.5   | 6 mm                     | 0.65 mm                        | HS1.3                            | 90 Degree        | <b>0262 25 6</b>  | 500     |
| M2.5   | 8 mm                     | 0.65 mm                        | HS1.3                            | 90 Degree        | <b>0262 25 8</b>  | 500     |
| M2.5   | 10 mm                    | 0.65 mm                        | HS1.3                            | 90 Degree        | <b>0262 25 10</b> | 500     |
| M3   | 3 mm                     | 0.75 mm                        | HS1.5                            | 120 Degree       | <b>0262 3 3</b>   | 200     |
| M3   | 4 mm                     | 0.75 mm                        | HS1.5                            | 120 Degree       | <b>0262 3 4</b>   | 200     |
| M3   | 5 mm                     | 0.75 mm                        | HS1.5                            | 90 Degree        | <b>0262 3 5</b>   | 200     |
| M3   | 6 mm                     | 0.75 mm                        | HS1.5                            | 90 Degree        | <b>0262 3 6</b>   | 200     |
| M3   | 8 mm                     | 0.75 mm                        | HS1.5                            | 90 Degree        | <b>0262 3 8</b>   | 200     |
| M3   | 10 mm                    | 0.75 mm                        | HS1.5                            | 90 Degree        | <b>0262 3 10</b>  | 200     |
| M3   | 12 mm                    | 0.75 mm                        | HS1.5                            | 90 Degree        | <b>0262 3 12</b>  | 200     |
| M3   | 16 mm                    | 0.75 mm                        | HS1.5                            | 90 Degree        | <b>0262 3 16</b>  | 200     |
| M3   | 20 mm                    | 0.75 mm                        | HS1.5                            | 90 Degree        | <b>0262 3 20</b>  | 200     |
| M3   | 25 mm                    | 0.75 mm                        | HS1.5                            | 90 Degree        | <b>0262 3 25</b>  | 200     |
| M4   | 4 mm                     | 1 mm                           | HS2                              | 120 Degree       | <b>0262 4 4</b>   | 100     |
| M4   | 5 mm                     | 1 mm                           | HS2                              | 120 Degree       | <b>0262 4 5</b>   | 100     |
| M4   | 6 mm                     | 1 mm                           | HS2                              | 90 Degree        | <b>0262 4 6</b>   | 100     |
| M4   | 8 mm                     | 1 mm                           | HS2                              | 90 Degree        | <b>0262 4 8</b>   | 100     |
| M4   | 10 mm                    | 1 mm                           | HS2                              | 90 Degree        | <b>0262 4 10</b>  | 100     |
| M4   | 12 mm                    | 1 mm                           | HS2                              | 90 Degree        | <b>0262 4 12</b>  | 100     |
| M4   | 16 mm                    | 1 mm                           | HS2                              | 90 Degree        | <b>0262 4 16</b>  | 100     |

| Thread type x nominal diameter (d <sub>1</sub> ) | Length (l <sub>1</sub> ) | Tip diameter (d <sub>2</sub> ) | Internal drive (s <sub>1</sub> ) | Angle of the tip | Art. no.          | P. Qty. |
|--|--------------------------|--------------------------------|----------------------------------|------------------|-------------------|---------|
| M4   | 20 mm                    | 1 mm                           | HS2                              | 90 Degree        | <b>0262 4 20</b>  | 100     |
| M4   | 25 mm                    | 1 mm                           | HS2                              | 90 Degree        | <b>0262 4 25</b>  | 100     |
| M4   | 35 mm                    | 1 mm                           | HS2                              | 90 Degree        | <b>0262 4 35</b>  | 100     |
| M4   | 40 mm                    | 1 mm                           | HS2                              | 90 Degree        | <b>0262 4 40</b>  | 100     |
| M5   | 4 mm                     | 1.25 mm                        | HS2.5                            | 120 Degree       | <b>0262 5 4</b>   | 1000    |
| M5   | 5 mm                     | 1.25 mm                        | HS2.5                            | 120 Degree       | <b>0262 5 5</b>   | 100     |
| M5   | 6 mm                     | 1.25 mm                        | HS2.5                            | 120 Degree       | <b>0262 5 6</b>   | 100     |
| M5   | 8 mm                     | 1.25 mm                        | HS2.5                            | 90 Degree        | <b>0262 5 8</b>   | 100     |
| M5   | 10 mm                    | 1.25 mm                        | HS2.5                            | 90 Degree        | <b>0262 5 10</b>  | 100     |
| M5   | 12 mm                    | 1.25 mm                        | HS2.5                            | 90 Degree        | <b>0262 5 12</b>  | 100     |
| M5   | 14 mm                    | 1.25 mm                        | HS2.5                            | 90 Degree        | <b>0262 5 14</b>  | 100     |
| M5   | 16 mm                    | 1.25 mm                        | HS2.5                            | 90 Degree        | <b>0262 5 16</b>  | 100     |
| M5   | 20 mm                    | 1.25 mm                        | HS2.5                            | 90 Degree        | <b>0262 5 20</b>  | 100     |
| M5   | 25 mm                    | 1.25 mm                        | HS2.5                            | 90 Degree        | <b>0262 5 25</b>  | 100     |
| M5   | 30 mm                    | 1.25 mm                        | HS2.5                            | 90 Degree        | <b>0262 5 30</b>  | 100     |
| M5   | 35 mm                    | 1.25 mm                        | HS2.5                            | 90 Degree        | <b>0262 5 35</b>  | 100     |
| M5   | 40 mm                    | 1.25 mm                        | HS2.5                            | 90 Degree        | <b>0262 5 40</b>  | 100     |
| M5   | 45 mm                    | 1.25 mm                        | HS2.5                            | 90 Degree        | <b>0262 5 45</b>  | 500     |
| M5   | 50 mm                    | 1.25 mm                        | HS2.5                            | 90 Degree        | <b>0262 5 50</b>  | 100     |
| M6   | 5 mm                     | 1.5 mm                         | HS3                              | 120 Degree       | <b>0262 6 5</b>   | 100     |
| M6   | 6 mm                     | 1.5 mm                         | HS3                              | 120 Degree       | <b>0262 6 6</b>   | 100     |
| M6   | 8 mm                     | 1.5 mm                         | HS3                              | 90 Degree        | <b>0262 6 8</b>   | 100     |
| M6   | 10 mm                    | 1.5 mm                         | HS3                              | 90 Degree        | <b>0262 6 10</b>  | 100     |
| M6   | 12 mm                    | 1.5 mm                         | HS3                              | 90 Degree        | <b>0262 6 12</b>  | 100     |
| M6   | 14 mm                    | 1.5 mm                         | HS3                              | 90 Degree        | <b>0262 6 14</b>  | 100     |
| M6   | 16 mm                    | 1.5 mm                         | HS3                              | 90 Degree        | <b>0262 6 16</b>  | 100     |
| M6   | 18 mm                    | 1.5 mm                         | HS3                              | 90 Degree        | <b>0262 6 18</b>  | 100     |
| M6   | 20 mm                    | 1.5 mm                         | HS3                              | 90 Degree        | <b>0262 6 20</b>  | 100     |
| M6   | 25 mm                    | 1.5 mm                         | HS3                              | 90 Degree        | <b>0262 6 25</b>  | 100     |
| M6   | 30 mm                    | 1.5 mm                         | HS3                              | 90 Degree        | <b>0262 6 30</b>  | 100     |
| M6   | 35 mm                    | 1.5 mm                         | HS3                              | 90 Degree        | <b>0262 6 35</b>  | 100     |
| M6   | 40 mm                    | 1.5 mm                         | HS3                              | 90 Degree        | <b>0262 6 40</b>  | 100     |
| M6   | 45 mm                    | 1.5 mm                         | HS3                              | 90 Degree        | <b>0262 6 45</b>  | 100     |
| M6   | 50 mm                    | 1.5 mm                         | HS3                              | 90 Degree        | <b>0262 6 50</b>  | 100     |
| M6   | 60 mm                    | 1.5 mm                         | HS3                              | 90 Degree        | <b>0262 6 60</b>  | 100     |
| M8   | 6 mm                     | 2 mm                           | HS4                              | 120 Degree       | <b>0262 8 6</b>   | 100     |
| M8   | 8 mm                     | 2 mm                           | HS4                              | 120 Degree       | <b>0262 8 8</b>   | 100     |
| M8   | 10 mm                    | 2 mm                           | HS4                              | 90 Degree        | <b>0262 8 10</b>  | 100     |
| M8   | 12 mm                    | 2 mm                           | HS4                              | 90 Degree        | <b>0262 8 12</b>  | 100     |
| M8   | 14 mm                    | 2 mm                           | HS4                              | 90 Degree        | <b>0262 8 14</b>  | 100     |
| M8   | 16 mm                    | 2 mm                           | HS4                              | 90 Degree        | <b>0262 8 16</b>  | 100     |
| M8   | 20 mm                    | 2 mm                           | HS4                              | 90 Degree        | <b>0262 8 20</b>  | 100     |
| M8   | 25 mm                    | 2 mm                           | HS4                              | 90 Degree        | <b>0262 8 25</b>  | 100     |
| M8   | 30 mm                    | 2 mm                           | HS4                              | 90 Degree        | <b>0262 8 30</b>  | 100     |
| M8   | 35 mm                    | 2 mm                           | HS4                              | 90 Degree        | <b>0262 8 35</b>  | 100     |
| M8   | 40 mm                    | 2 mm                           | HS4                              | 90 Degree        | <b>0262 8 40</b>  | 100     |
| M8   | 45 mm                    | 2 mm                           | HS4                              | 90 Degree        | <b>0262 8 45</b>  | 100     |
| M8   | 50 mm                    | 2 mm                           | HS4                              | 90 Degree        | <b>0262 8 50</b>  | 100     |
| M10  | 10 mm                    | 2.5 mm                         | HS5                              | 120 Degree       | <b>0262 10 10</b> | 100     |
| M10  | 12 mm                    | 2.5 mm                         | HS5                              | 90 Degree        | <b>0262 10 12</b> | 100     |
| M10  | 14 mm                    | 2.5 mm                         | HS5                              | 90 Degree        | <b>0262 10 14</b> | 500     |
| M10  | 16 mm                    | 2.5 mm                         | HS5                              | 90 Degree        | <b>0262 10 16</b> | 100     |
| M10  | 20 mm                    | 2.5 mm                         | HS5                              | 90 Degree        | <b>0262 10 20</b> | 100     |

| Thread type x nominal diameter (d <sub>1</sub> ) | Length (l <sub>1</sub> ) | Tip diameter (d <sub>2</sub> ) | Internal drive (s <sub>1</sub> ) | Angle of the tip | Art. no.           | P. Qty. |
|--|--------------------------|--------------------------------|----------------------------------|------------------|--------------------|---------|
| M10  | 25 mm                    | 2.5 mm                         | HS5                              | 90 Degree        | <b>0262 10 25</b>  | 100     |
| M10  | 30 mm                    | 2.5 mm                         | HS5                              | 90 Degree        | <b>0262 10 30</b>  | 100     |
| M10  | 35 mm                    | 2.5 mm                         | HS5                              | 90 Degree        | <b>0262 10 35</b>  | 100     |
| M10  | 40 mm                    | 2.5 mm                         | HS5                              | 90 Degree        | <b>0262 10 40</b>  | 100     |
| M10  | 45 mm                    | 2.5 mm                         | HS5                              | 90 Degree        | <b>0262 10 45</b>  | 100     |
| M10  | 50 mm                    | 2.5 mm                         | HS5                              | 90 Degree        | <b>0262 10 50</b>  | 100     |
| M10  | 55 mm                    | 2.5 mm                         | HS5                              | 90 Degree        | <b>0262 10 55</b>  | 100     |
| M10  | 60 mm                    | 2.5 mm                         | HS5                              | 90 Degree        | <b>0262 10 60</b>  | 100     |
| M10  | 70 mm                    | 2.5 mm                         | HS5                              | 90 Degree        | <b>0262 10 70</b>  | 100     |
| M10  | 80 mm                    | 2.5 mm                         | HS5                              | 90 Degree        | <b>0262 10 80</b>  | 100     |
| M12  | 12 mm                    | 3 mm                           | HS6                              | 120 Degree       | <b>0262 12 12</b>  | 100     |
| M12  | 16 mm                    | 3 mm                           | HS6                              | 90 Degree        | <b>0262 12 16</b>  | 100     |
| M12  | 20 mm                    | 3 mm                           | HS6                              | 90 Degree        | <b>0262 12 20</b>  | 100     |
| M12  | 25 mm                    | 3 mm                           | HS6                              | 90 Degree        | <b>0262 12 25</b>  | 100     |
| M12  | 30 mm                    | 3 mm                           | HS6                              | 90 Degree        | <b>0262 12 30</b>  | 100     |
| M12  | 35 mm                    | 3 mm                           | HS6                              | 90 Degree        | <b>0262 12 35</b>  | 100     |
| M12  | 40 mm                    | 3 mm                           | HS6                              | 90 Degree        | <b>0262 12 40</b>  | 100     |
| M12  | 45 mm                    | 3 mm                           | HS6                              | 90 Degree        | <b>0262 12 45</b>  | 100     |
| M12  | 50 mm                    | 3 mm                           | HS6                              | 90 Degree        | <b>0262 12 50</b>  | 100     |
| M12  | 60 mm                    | 3 mm                           | HS6                              | 90 Degree        | <b>0262 12 60</b>  | 100     |
| M12  | 70 mm                    | 3 mm                           | HS6                              | 90 Degree        | <b>0262 12 70</b>  | 50      |
| M12  | 80 mm                    | 3 mm                           | HS6                              | 90 Degree        | <b>0262 12 80</b>  | 50      |
| M16  | 20 mm                    | 4 mm                           | HS8                              | 90 Degree        | <b>0262 16 20</b>  | 25      |
| M16  | 25 mm                    | 4 mm                           | HS8                              | 90 Degree        | <b>0262 16 25</b>  | 25      |
| M16  | 30 mm                    | 4 mm                           | HS8                              | 90 Degree        | <b>0262 16 30</b>  | 25      |
| M16  | 35 mm                    | 4 mm                           | HS8                              | 90 Degree        | <b>0262 16 35</b>  | 25      |
| M16  | 40 mm                    | 4 mm                           | HS8                              | 90 Degree        | <b>0262 16 40</b>  | 25      |
| M16  | 50 mm                    | 4 mm                           | HS8                              | 90 Degree        | <b>0262 16 50</b>  | 10      |
| M16  | 70 mm                    | 4 mm                           | HS8                              | 90 Degree        | <b>0262 16 70</b>  | 10      |
| M16  | 80 mm                    | 4 mm                           | HS8                              | 90 Degree        | <b>0262 16 80</b>  | 10      |
| M16  | 100 mm                   | 4 mm                           | HS8                              | 90 Degree        | <b>0262 16 100</b> | 50      |
| M20  | 35 mm                    | 5 mm                           | HS10                             | 90 Degree        | <b>0262 20 35</b>  | 25      |
| M20  | 40 mm                    | 5 mm                           | HS10                             | 90 Degree        | <b>0262 20 40</b>  | 50      |
| M20  | 50 mm                    | 5 mm                           | HS10                             | 90 Degree        | <b>0262 20 50</b>  | 10      |
| M20  | 55 mm                    | 5 mm                           | HS10                             | 90 Degree        | <b>0262 20 55</b>  | 25      |
| M20  | 80 mm                    | 5 mm                           | HS10                             | 90 Degree        | <b>0262 20 80</b>  | 10      |

## Details/Application



**Notice**

Hardness class 21H corresponds to a hardness of 210 HV

The standard tip has an angle of 90°, but very short lengths have an angle of 120°.

**Tip:**

A2/A4 stainless steel set screws are not specially hardened and may be used for pulling loads.

ISO 4027 replaces DIN 914 | There is some similarity | Nominal diameters for M1.4, M1.8, M14, M18, M22 omitted | Hardness classes for stainless steels introduced.