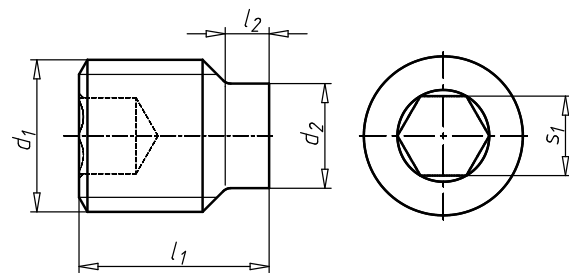


Hexagon socket set screw with pin

ISO 4028, steel 45H, plain

Standards	ISO 4028
Material	Steel
Surface	Plain
Hardness category	45H
Drive type	Hexagon socket
Thread format	Standard metric thread
Shape of tip	Cone shaped
RoHS-compliant	Yes



Thread type x nominal diameter (d ₁)	Length (l ₁)	Tenon diameter (d ₂)	Length of tenon (l ₂)	Internal drive (s ₁)	Art. no.	P. Qty.
M2	4 mm	1 mm	1 mm	HS0.9	0257 2 4	1000
M2	6 mm	1 mm	1 mm	HS0.9	0257 2 6	1000
M2.5	4 mm	1.5 mm	0.63 mm	HS1.3	0257 25 4	10000
M2.5	5 mm	1.5 mm	1.25 mm	HS1.3	0257 25 5	100
M2.5	6 mm	1.5 mm	1.25 mm	HS1.3	0257 25 6	200
M2.5	8 mm	1.5 mm	1.25 mm	HS1.3	0257 25 8	200
M3	3 mm	2 mm	0.75 mm	HS1.5	0257 3 3	200
M3	4 mm	2 mm	0.75 mm	HS1.5	0257 3 4	200
M3	5 mm	2 mm	0.75 mm	HS1.5	0257 3 5	200
M3	6 mm	2 mm	1.5 mm	HS1.5	0257 3 6	200
M3	8 mm	2 mm	1.5 mm	HS1.5	0257 3 8	200
M3	10 mm	2 mm	1.5 mm	HS1.5	0257 3 10	200
M3	12 mm	2 mm	1.5 mm	HS1.5	0257 3 12	200
M3	14 mm	2 mm	1.5 mm	HS1.5	0257 3 14	200
M3	16 mm	2 mm	1.5 mm	HS1.5	0257 3 16	200/1000
M3	18 mm	2 mm	1.5 mm	HS1.5	0257 3 18	200
M3	20 mm	2 mm	1.5 mm	HS1.5	0257 3 20	200
M3	25 mm	2 mm	1.5 mm	HS1.5	0257 3 25	500
M3	30 mm	2 mm	1.5 mm	HS1.5	0257 3 30	500
M4	4 mm	2.5 mm	1 mm	HS2	0257 4 4	200
M4	5 mm	2.5 mm	1 mm	HS2	0257 4 5	200
M4	6 mm	2.5 mm	1 mm	HS2	0257 4 6	200
M4	8 mm	2.5 mm	2 mm	HS2	0257 4 8	200
M4	10 mm	2.5 mm	2 mm	HS2	0257 4 10	200
M4	12 mm	2.5 mm	2 mm	HS2	0257 4 12	200
M4	14 mm	2.5 mm	2 mm	HS2	0257 4 14	1000
M4	16 mm	2.5 mm	2 mm	HS2	0257 4 16	200
M4	18 mm	2.5 mm	2 mm	HS2	0257 4 18	100
M4	20 mm	2.5 mm	2 mm	HS2	0257 4 20	200
M4	22 mm	2.5 mm	2 mm	HS2	0257 4 22	500

Thread type x nominal diameter (d ₁)	Length (l ₁)	Tenon diameter (d ₂)	Length of tenon (l ₂)	Internal drive (s ₁)	Art. no.	P. Qty.
M4	25 mm	2.5 mm	2 mm	HS2	0257 4 25	200
M4	30 mm	2.5 mm	2 mm	HS2	0257 4 30	200
M4	35 mm	2.5 mm	2 mm	HS2	0257 4 35	200
M4	40 mm	2.5 mm	2 mm	HS2	0257 4 40	500
M5	5 mm	3.5 mm	1.25 mm	HS2.5	0257 5 5	200
M5	6 mm	3.5 mm	1.25 mm	HS2.5	0257 5 6	200
M5	8 mm	3.5 mm	2.5 mm	HS2.5	0257 5 8	200
M5	10 mm	3.5 mm	2.5 mm	HS2.5	0257 5 10	200
M5	12 mm	3.5 mm	2.5 mm	HS2.5	0257 5 12	200
M5	14 mm	3.5 mm	2.5 mm	HS2.5	0257 5 14	200
M5	16 mm	3.5 mm	2.5 mm	HS2.5	0257 5 16	200
M5	18 mm	3.5 mm	2.5 mm	HS2.5	0257 5 18	200
M5	20 mm	3.5 mm	2.5 mm	HS2.5	0257 5 20	200
M5	22 mm	3.5 mm	2.5 mm	HS2.5	0257 5 22	200
M5	25 mm	3.5 mm	2.5 mm	HS2.5	0257 5 25	200
M5	30 mm	3.5 mm	2.5 mm	HS2.5	0257 5 30	100
M5	35 mm	3.5 mm	2.5 mm	HS2.5	0257 5 35	100
M5	40 mm	3.5 mm	2.5 mm	HS2.5	0257 5 40	100
M5	45 mm	3.5 mm	2.5 mm	HS2.5	0257 5 45	100
M5	50 mm	3.5 mm	2.5 mm	HS2.5	0257 5 50	100
M6	6 mm	4 mm	1.5 mm	HS3	0257 6 6	100
M6	8 mm	4 mm	1.5 mm	HS3	0257 6 8	100
M6	10 mm	4 mm	3 mm	HS3	0257 6 10	100
M6	12 mm	4 mm	3 mm	HS3	0257 6 12	100
M6	14 mm	4 mm	3 mm	HS3	0257 6 14	100
M6	16 mm	4 mm	3 mm	HS3	0257 6 16	100
M6	18 mm	4 mm	3 mm	HS3	0257 6 18	100
M6	20 mm	4 mm	3 mm	HS3	0257 6 20	100
M6	22 mm	4 mm	3 mm	HS3	0257 6 22	500
M6	25 mm	4 mm	3 mm	HS3	0257 6 25	100
M6	30 mm	4 mm	3 mm	HS3	0257 6 30	100
M6	35 mm	4 mm	3 mm	HS3	0257 6 35	100
M6	40 mm	4 mm	3 mm	HS3	0257 6 40	100
M6	45 mm	4 mm	3 mm	HS3	0257 6 45	100
M6	50 mm	4 mm	3 mm	HS3	0257 6 50	100
M6	55 mm	4 mm	3 mm	HS3	0257 6 55	100
M6	60 mm	4 mm	3 mm	HS3	0257 6 60	100
M6	70 mm	4 mm	3 mm	HS3	0257 6 70	100
M6	80 mm	4 mm	3 mm	HS3	0257 6 80	100
M8	8 mm	5.5 mm	2 mm	HS4	0257 8 8	100
M8	10 mm	5.5 mm	4 mm	HS4	0257 8 10	100
M8	12 mm	5.5 mm	4 mm	HS4	0257 8 12	100
M8	14 mm	5.5 mm	4 mm	HS4	0257 8 14	100
M8	16 mm	5.5 mm	4 mm	HS4	0257 8 16	100
M8	18 mm	5.5 mm	4 mm	HS4	0257 8 18	100
M8	20 mm	5.5 mm	4 mm	HS4	0257 8 20	100
M8	22 mm	5.5 mm	4 mm	HS4	0257 8 22	100
M8	25 mm	5.5 mm	4 mm	HS4	0257 8 25	100
M8	30 mm	5.5 mm	4 mm	HS4	0257 8 30	100
M8	35 mm	5.5 mm	4 mm	HS4	0257 8 35	100
M8	40 mm	5.5 mm	4 mm	HS4	0257 8 40	100
M8	45 mm	5.5 mm	4 mm	HS4	0257 8 45	100
M8	50 mm	5.5 mm	4 mm	HS4	0257 8 50	100

Thread type x nominal diameter (d ₁)	Length (l ₁)	Tenon diameter (d ₂)	Length of tenon (l ₂)	Internal drive (s ₁)	Art. no.	P. Qty.
M8	55 mm	5.5 mm	4 mm	HS4	0257 8 55	100
M8	60 mm	5.5 mm	4 mm	HS4	0257 8 60	100
M8	65 mm	5.5 mm	4 mm	HS4	0257 8 65	100
M8	70 mm	5.5 mm	4 mm	HS4	0257 8 70	50
M8	80 mm	5.5 mm	4 mm	HS4	0257 8 80	50
M8	90 mm	5.5 mm	4 mm	HS4	0257 8 90	50
M8	100 mm	5.5 mm	4 mm	HS4	0257 8 100	50
M10	10 mm	7 mm	5 mm	HS5	0257 10 10	100
M10	12 mm	7 mm	5 mm	HS5	0257 10 12	100
M10	14 mm	7 mm	5 mm	HS5	0257 10 14	100
M10	16 mm	7 mm	5 mm	HS5	0257 10 16	100
M10	18 mm	7 mm	5 mm	HS5	0257 10 18	100
M10	20 mm	7 mm	5 mm	HS5	0257 10 20	100
M10	22 mm	7 mm	5 mm	HS5	0257 10 22	100
M10	25 mm	7 mm	5 mm	HS5	0257 10 25	100
M10	30 mm	7 mm	5 mm	HS5	0257 10 30	100
M10	35 mm	7 mm	5 mm	HS5	0257 10 35	100
M10	40 mm	7 mm	5 mm	HS5	0257 10 40	100
M10	45 mm	7 mm	5 mm	HS5	0257 10 45	100
M10	50 mm	7 mm	5 mm	HS5	0257 10 50	100
M10	55 mm	7 mm	5 mm	HS5	0257 10 55	100
M10	60 mm	7 mm	5 mm	HS5	0257 10 60	100
M10	65 mm	7 mm	5 mm	HS5	0257 10 65	100
M10	70 mm	7 mm	5 mm	HS5	0257 10 70	25
M10	80 mm	7 mm	5 mm	HS5	0257 10 80	25/50
M10	90 mm	7 mm	5 mm	HS5	0257 10 90	25
M10	100 mm	7 mm	5 mm	HS5	0257 10 100	25
M12	10 mm	8.5 mm	3 mm	HS6	0257 12 10	200
M12	12 mm	8.5 mm	3 mm	HS6	0257 12 12	100
M12	14 mm	8.5 mm	3 mm	HS6	0257 12 14	100
M12	16 mm	8.5 mm	3 mm	HS6	0257 12 16	100
M12	18 mm	8.5 mm	6 mm	HS6	0257 12 18	100
M12	20 mm	8.5 mm	6 mm	HS6	0257 12 20	100
M12	22 mm	8.5 mm	6 mm	HS6	0257 12 22	100
M12	25 mm	8.5 mm	6 mm	HS6	0257 12 25	100
M12	30 mm	8.5 mm	6 mm	HS6	0257 12 30	100
M12	35 mm	8.5 mm	6 mm	HS6	0257 12 35	100
M12	40 mm	8.5 mm	6 mm	HS6	0257 12 40	100
M12	45 mm	8.5 mm	6 mm	HS6	0257 12 45	100
M12	50 mm	8.5 mm	6 mm	HS6	0257 12 50	100
M12	55 mm	8.5 mm	6 mm	HS6	0257 12 55	100
M12	60 mm	8.5 mm	6 mm	HS6	0257 12 60	100
M12	65 mm	8.5 mm	6 mm	HS6	0257 12 65	100
M12	70 mm	8.5 mm	6 mm	HS6	0257 12 70	50
M12	80 mm	8.5 mm	6 mm	HS6	0257 12 80	50
M12	90 mm	8.5 mm	6 mm	HS6	0257 12 90	50
M12	100 mm	8.5 mm	6 mm	HS6	0257 12 100	50
M12	120 mm	8.5 mm	6 mm	HS6	0257 12 120	50
M12	130 mm	8.5 mm	6 mm	HS6	0257 12 130	50
M12	140 mm	8.5 mm	6 mm	HS6	0257 12 140	50
M12	160 mm	8.5 mm	6 mm	HS6	0257 12 160	50
M12	200 mm	8.5 mm	6 mm	HS6	0257 12 200	10
M14	16 mm	10 mm	3.5 mm	HS6	0257 14 16	200

Thread type x nominal diameter (d ₁)	Length (l ₁)	Tenon diameter (d ₂)	Length of tenon (l ₂)	Internal drive (s ₁)	Art. no.	P. Qty.
M14	20 mm	10 mm	3.5 mm	HS6	0257 14 20	200
M14	25 mm	10 mm	7 mm	HS6	0257 14 25	200
M14	30 mm	10 mm	7 mm	HS6	0257 14 30	200
M14	35 mm	10 mm	7 mm	HS6	0257 14 35	200
M14	40 mm	10 mm	7 mm	HS6	0257 14 40	50
M14	45 mm	10 mm	7 mm	HS6	0257 14 45	100
M14	50 mm	10 mm	7 mm	HS6	0257 14 50	100
M14	60 mm	10 mm	7 mm	HS6	0257 14 60	50
M14	70 mm	10 mm	7 mm	HS6	0257 14 70	50
M14	80 mm	10 mm	7 mm	HS6	0257 14 80	50
M14	90 mm	10 mm	7 mm	HS6	0257 14 90	50
M14	100 mm	10 mm	7 mm	HS6	0257 14 100	50
M16	16 mm	12 mm	4 mm	HS8	0257 16 16	25
M16	18 mm	12 mm	4 mm	HS8	0257 16 18	50
M16	20 mm	12 mm	4 mm	HS8	0257 16 20	25
M16	22 mm	12 mm	8 mm	HS8	0257 16 22	50
M16	25 mm	12 mm	8 mm	HS8	0257 16 25	25
M16	30 mm	12 mm	8 mm	HS8	0257 16 30	25
M16	35 mm	12 mm	8 mm	HS8	0257 16 35	25
M16	40 mm	12 mm	8 mm	HS8	0257 16 40	25
M16	45 mm	12 mm	8 mm	HS8	0257 16 45	10
M16	50 mm	12 mm	8 mm	HS8	0257 16 50	10
M16	55 mm	12 mm	8 mm	HS8	0257 16 55	10
M16	60 mm	12 mm	8 mm	HS8	0257 16 60	10
M16	65 mm	12 mm	8 mm	HS8	0257 16 65	50
M16	70 mm	12 mm	8 mm	HS8	0257 16 70	10
M16	80 mm	12 mm	8 mm	HS8	0257 16 80	10
M16	90 mm	12 mm	8 mm	HS8	0257 16 90	25
M16	100 mm	12 mm	8 mm	HS8	0257 16 100	50
M16	110 mm	12 mm	8 mm	HS8	0257 16 110	25
M16	120 mm	12 mm	8 mm	HS8	0257 16 120	50
M16	130 mm	12 mm	8 mm	HS8	0257 16 130	10
M16	140 mm	12 mm	8 mm	HS8	0257 16 140	50
M16	155 mm	12 mm	8 mm	HS8	0257 16 155	25
M16	160 mm	12 mm	8 mm	HS8	0257 16 160	25
M16	180 mm	12 mm	8 mm	HS8	0257 16 180	5
M18	20 mm	13 mm	4.5 mm	HS10	0257 18 20	100
M18	25 mm	13 mm	4.5 mm	HS10	0257 18 25	100
M18	30 mm	13 mm	9 mm	HS10	0257 18 30	100
M18	35 mm	13 mm	9 mm	HS10	0257 18 35	100
M18	40 mm	13 mm	9 mm	HS10	0257 18 40	100
M18	45 mm	13 mm	9 mm	HS10	0257 18 45	50
M18	50 mm	13 mm	9 mm	HS10	0257 18 50	50
M18	60 mm	13 mm	9 mm	HS10	0257 18 60	50
M18	70 mm	13 mm	9 mm	HS10	0257 18 70	50
M18	80 mm	13 mm	9 mm	HS10	0257 18 80	25
M18	90 mm	13 mm	9 mm	HS10	0257 18 90	25
M18	100 mm	13 mm	9 mm	HS10	0257 18 100	25
M20	20 mm	15 mm	5 mm	HS10	0257 20 20	100
M20	25 mm	15 mm	5 mm	HS10	0257 20 25	100
M20	30 mm	15 mm	10 mm	HS10	0257 20 30	100
M20	35 mm	15 mm	10 mm	HS10	0257 20 35	100
M20	40 mm	15 mm	10 mm	HS10	0257 20 40	50

Thread type x nominal diameter (d ₁)	Length (l ₁)	Tenon diameter (d ₂)	Length of tenon (l ₂)	Internal drive (s ₁)	Art. no.	P. Qty.
M20	45 mm	15 mm	10 mm	HS10	0257 20 45	50
M20	50 mm	15 mm	10 mm	HS10	0257 20 50	50
M20	55 mm	15 mm	10 mm	HS10	0257 20 55	25
M20	60 mm	15 mm	10 mm	HS10	0257 20 60	50
M20	65 mm	15 mm	10 mm	HS10	0257 20 65	25
M20	70 mm	15 mm	10 mm	HS10	0257 20 70	25
M20	80 mm	15 mm	10 mm	HS10	0257 20 80	25
M20	90 mm	15 mm	10 mm	HS10	0257 20 90	25
M20	100 mm	15 mm	10 mm	HS10	0257 20 100	25
M20	105 mm	15 mm	10 mm	HS10	0257 20 105	10
M20	120 mm	15 mm	10 mm	HS10	0257 20 120	50
M20	130 mm	15 mm	10 mm	HS10	0257 20 130	50
M20	150 mm	15 mm	10 mm	HS10	0257 20 150	50
M22	20 mm	17 mm	5.5 mm	HS12	0257 22 20	100
M22	25 mm	17 mm	5.5 mm	HS12	0257 22 25	100
M22	30 mm	17 mm	5.5 mm	HS12	0257 22 30	100
M22	35 mm	17 mm	11 mm	HS12	0257 22 35	50
M22	40 mm	17 mm	11 mm	HS12	0257 22 40	50
M22	45 mm	17 mm	11 mm	HS12	0257 22 45	50
M22	50 mm	17 mm	11 mm	HS12	0257 22 50	50
M22	60 mm	17 mm	11 mm	HS12	0257 22 60	25
M22	70 mm	17 mm	11 mm	HS12	0257 22 70	25
M22	80 mm	17 mm	11 mm	HS12	0257 22 80	25
M22	90 mm	17 mm	11 mm	HS12	0257 22 90	25
M22	100 mm	17 mm	11 mm	HS12	0257 22 100	25
M24	20 mm	18 mm	6 mm	HS12	0257 24 20	25
M24	22 mm	18 mm	6 mm	HS12	0257 24 22	25
M24	25 mm	18 mm	6 mm	HS12	0257 24 25	25
M24	30 mm	18 mm	6 mm	HS12	0257 24 30	50
M24	35 mm	18 mm	12 mm	HS12	0257 24 35	25
M24	40 mm	18 mm	12 mm	HS12	0257 24 40	50
M24	45 mm	18 mm	12 mm	HS12	0257 24 45	25
M24	50 mm	18 mm	12 mm	HS12	0257 24 50	25
M24	55 mm	18 mm	12 mm	HS12	0257 24 55	25
M24	60 mm	18 mm	12 mm	HS12	0257 24 60	25
M24	65 mm	18 mm	12 mm	HS12	0257 24 65	25
M24	70 mm	18 mm	12 mm	HS12	0257 24 70	25
M24	80 mm	18 mm	12 mm	HS12	0257 24 80	25
M24	90 mm	18 mm	12 mm	HS12	0257 24 90	25
M24	100 mm	18 mm	12 mm	HS12	0257 24 100	25
M24	120 mm	18 mm	12 mm	HS12	0257 24 120	20
M24	130 mm	18 mm	12 mm	HS12	0257 24 130	10

Details/Application

Steel set screws are intended for use under compressive stress only (see also DIN EN ISO 898-5). Typical uses include clamping in an adjusting ring or applying pressure to a counterpart. Steel set screws are therefore extremely hard in order to ensure torsional strength in the hexagon socket during tightening/loosening.

Improper application is likely if set screws are welded, tightened and secured with nuts or subjected to bending. Any application of tensile stress is considered improper use and can result in malfunction.

Tip:

A2/A4 stainless steel set screws are not specially hardened and may be used for tensile loads.

**Notice**

Hardness class 45H corresponds to a hardness of 450 HV

ISO 4028 replaces DIN 915 | There is some similarity | Nominal diameters for M1.4, M1.8, M14, M18, M22 are removed |
Hardness classes for stainless steels introduced.