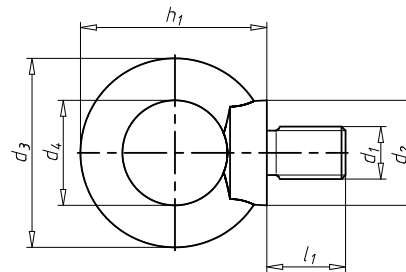


## Ring screw

**DIN 580, steel, C15E, plain**

Standards	DIN 580
Material	Case hardening steel, 1.1141 C15E
Surface	Plain
RoHS-compliant	Yes



Art. no.	0295 906	0295 908	0295 901 0	0295 901 2	0295 901 6	0295 902 0
P. Qty.	25	25/50	5/40	5/25	5/20	5/10
Thread type x nominal diameter (d <sub>1</sub> )	M6	M8	M10	M12	M16	M20
Diameter of contact surface (d <sub>2</sub> )	20 mm	20 mm	25 mm	30 mm	35 mm	40 mm
Outer diameter (d <sub>3</sub> )	36 mm	36 mm	45 mm	54 mm	63 mm	72 mm
Internal diameter (d <sub>4</sub> )	20 mm	20 mm	25 mm	30 mm	35 mm	40 mm
Height (h <sub>1</sub> )	36 mm	36 mm	45 mm	53 mm	62 mm	71 mm
Length (l <sub>1</sub> )	13 mm	13 mm	17 mm	20.5 mm	27 mm	30 mm
Max. load capacity	75 kg	140 kg	230 kg	340 kg	700 kg	1200 kg

Art. no.	0295 902 4	0295 903 0	0295 903 6	0295 904 2	0295 904 8	0295 905 6
<b>P. Qty.</b>	5	1/5	1	1	1	1
<b>Thread type x nominal diameter (d<sub>1</sub>)</b>	M24	M30	M36	M42	M48	M56
<b>Diameter of contact surface (d<sub>2</sub>)</b>	50 mm	65 mm	75 mm	85 mm	100 mm	110 mm
<b>Outer diameter (d<sub>3</sub>)</b>	90 mm	108 mm	126 mm	144 mm	166 mm	184 mm
<b>Internal diameter (d<sub>4</sub>)</b>	50 mm	60 mm	70 mm	80 mm	90 mm	100 mm
<b>Height (h<sub>1</sub>)</b>	90 mm	109 mm	128 mm	147 mm	168 mm	187 mm
<b>Length (l<sub>1</sub>)</b>	36 mm	45 mm	54 mm	63 mm	68 mm	78 mm
<b>Max. load capacity</b>	1800 kg	3200 kg	4600 kg	6300 kg	8600 kg	11500 kg

Art. no.	0295 906 4	0295 908 0
<b>P. Qty.</b>	1	1
<b>Thread type x nominal diameter (d<sub>1</sub>)</b>	M64	M80
<b>Diameter of contact surface (d<sub>2</sub>)</b>	120 mm	170 mm
<b>Outer diameter (d<sub>3</sub>)</b>	206 mm	296 mm
<b>Internal diameter (d<sub>4</sub>)</b>	110 mm	160 mm
<b>Height (h<sub>1</sub>)</b>	208 mm	298 mm
<b>Length (l<sub>1</sub>)</b>	90 mm	112 mm
<b>Max. load capacity</b>	16000 kg	28000 kg

Compatible with ORSY® storage system

## Notice

Please take note of the information in the installation instructions prior to use!

Ring screws M6 are not part of DIN 580!