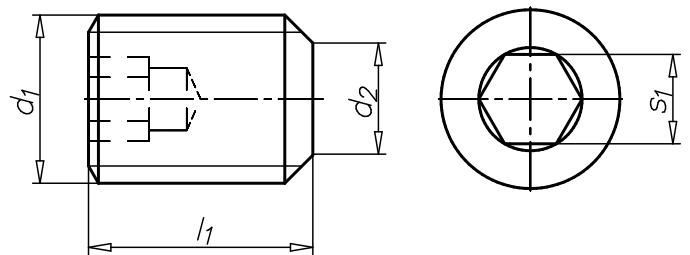


Hexagon socket set screw with truncated cone

ISO 4026, steel 45H, plain

Standards	ISO 4026
Material	Steel
Surface	Plain
Hardness category	45H
Drive type	Hexagon socket
Thread type	Metric thread
Thread format	Standard metric thread
Shape of tip	Truncated cone
RoHS-compliant	Yes



Thread type x nominal diameter (d ₁)	Length (l ₁)	Diameter of flat point (d ₂)	Internal drive (s ₁)	Art. no.	P. Qty.
M1.6	2.5 mm	0.8 mm	HS0.7	0255 116 25	500
M1.6	3 mm	0.8 mm	HS0.7	0255 116 3	500
M1.6	4 mm	0.8 mm	HS0.7	0255 116 4	500
M1.6	5 mm	0.8 mm	HS0.7	0255 116 5	500
M1.6	6 mm	0.8 mm	HS0.7	0255 116 6	500
M1.6	8 mm	0.8 mm	HS0.7	0255 116 8	500
M2	2 mm	1 mm	HS0.9	0255 2 2	1000
M2	2.5 mm	1 mm	HS0.9	0255 2 25	1000
M2	3 mm	1 mm	HS0.9	0255 2 3	1000
M2	4 mm	1 mm	HS0.9	0255 2 4	1000
M2	5 mm	1 mm	HS0.9	0255 2 5	1000
M2	6 mm	1 mm	HS0.9	0255 2 6	1000
M2	8 mm	1 mm	HS0.9	0255 2 8	1000
M2	10 mm	1 mm	HS0.9	0255 2 10	1000
M2	12 mm	1 mm	HS0.9	0255 2 12	1000
M2	16 mm	1 mm	HS0.9	0255 2 16	1000
M2.5	2.5 mm	1.5 mm	HS1.3	0255 25 25	1000
M2.5	3 mm	1.5 mm	HS1.3	0255 25 3	1000
M2.5	4 mm	1.5 mm	HS1.3	0255 25 4	2500
M2.5	5 mm	1.5 mm	HS1.3	0255 25 5	2000
M2.5	8 mm	1.5 mm	HS1.3	0255 25 8	1000
M2.5	10 mm	1.5 mm	HS1.3	0255 25 10	1000
M2.5	12 mm	1.5 mm	HS1.3	0255 25 12	1000
M2.5	16 mm	1.5 mm	HS1.3	0255 25 16	1000
M3	3 mm	2 mm	HS1.5	0255 3 3	200
M3	4 mm	2 mm	HS1.5	0255 3 4	200
M3	5 mm	2 mm	HS1.5	0255 3 5	200
M3	6 mm	2 mm	HS1.5	0255 3 6	200
M3	8 mm	2 mm	HS1.5	0255 3 8	200/1000
M3	10 mm	2 mm	HS1.5	0255 3 10	200
M3	12 mm	2 mm	HS1.5	0255 3 12	200
M3	14 mm	2 mm	HS1.5	0255 3 14	200

Thread type x nominal diameter (d ₁)	Length (l ₁)	Diameter of flat point (d ₂)	Internal drive (s ₁)	Art. no.	P. Qty.
M3	16 mm	2 mm	HS1.5	0255 3 16	200
M3	18 mm	2 mm	HS1.5	0255 3 18	200
M3	20 mm	2 mm	HS1.5	0255 3 20	200
M3	25 mm	2 mm	HS1.5	0255 3 25	200
M3	30 mm	2 mm	HS1.5	0255 3 30	200
M3	35 mm	2 mm	HS1.5	0255 3 35	200
M4	3 mm	2.5 mm	HS2	0255 4 3	200
M4	4 mm	2.5 mm	HS2	0255 4 4	200
M4	5 mm	2.5 mm	HS2	0255 4 5	200
M4	6 mm	2.5 mm	HS2	0255 4 6	200
M4	8 mm	2.5 mm	HS2	0255 4 8	200
M4	10 mm	2.5 mm	HS2	0255 4 10	200
M4	12 mm	2.5 mm	HS2	0255 4 12	200
M4	14 mm	2.5 mm	HS2	0255 4 14	200
M4	16 mm	2.5 mm	HS2	0255 4 16	200
M4	18 mm	2.5 mm	HS2	0255 4 18	200
M4	20 mm	2.5 mm	HS2	0255 4 20	200
M4	22 mm	2.5 mm	HS2	0255 4 22	200
M4	25 mm	2.5 mm	HS2	0255 4 25	200
M4	30 mm	2.5 mm	HS2	0255 4 30	200
M4	35 mm	2.5 mm	HS2	0255 4 35	100
M4	40 mm	2.5 mm	HS2	0255 4 40	100
M4	45 mm	2.5 mm	HS2	0255 4 45	100
M4	60 mm	2.5 mm	HS2	0255 4 60	100
M5	4 mm	3.5 mm	HS2.5	0255 5 4	200
M5	5 mm	3.5 mm	HS2.5	0255 5 5	200
M5	6 mm	3.5 mm	HS2.5	0255 5 6	200
M5	8 mm	3.5 mm	HS2.5	0255 5 8	200
M5	10 mm	3.5 mm	HS2.5	0255 5 10	200
M5	12 mm	3.5 mm	HS2.5	0255 5 12	200
M5	14 mm	3.5 mm	HS2.5	0255 5 14	200
M5	16 mm	3.5 mm	HS2.5	0255 5 16	200
M5	20 mm	3.5 mm	HS2.5	0255 5 20	200
M5	25 mm	3.5 mm	HS2.5	0255 5 25	200
M5	30 mm	3.5 mm	HS2.5	0255 5 30	200
M5	35 mm	3.5 mm	HS2.5	0255 5 35	100
M5	40 mm	3.5 mm	HS2.5	0255 5 40	100
M5	45 mm	3.5 mm	HS2.5	0255 5 45	100
M5	50 mm	3.5 mm	HS2.5	0255 5 50	100
M5	65 mm	3.5 mm	HS2.5	0255 5 65	250
M5	75 mm	3.5 mm	HS2.5	0255 5 75	50
M6	4 mm	4 mm	HS3	0255 6 4	100
M6	5 mm	4 mm	HS3	0255 6 5	100
M6	6 mm	4 mm	HS3	0255 6 6	100
M6	8 mm	4 mm	HS3	0255 6 8	100
M6	10 mm	4 mm	HS3	0255 6 10	100
M6	12 mm	4 mm	HS3	0255 6 12	100
M6	14 mm	4 mm	HS3	0255 6 14	100
M6	16 mm	4 mm	HS3	0255 6 16	100
M6	18 mm	4 mm	HS3	0255 6 18	100
M6	20 mm	4 mm	HS3	0255 6 20	100
M6	22 mm	4 mm	HS3	0255 6 22	100
M6	25 mm	4 mm	HS3	0255 6 25	100
M6	28 mm	4 mm	HS3	0255 6 28	500

Thread type x nominal diameter (d ₁)	Length (l ₁)	Diameter of flat point (d ₂)	Internal drive (s ₁)	Art. no.	P. Qty.
M6	30 mm	4 mm	HS3	0255 6 30	100
M6	35 mm	4 mm	HS3	0255 6 35	100
M6	40 mm	4 mm	HS3	0255 6 40	100
M6	45 mm	4 mm	HS3	0255 6 45	100
M6	50 mm	4 mm	HS3	0255 6 50	100
M6	55 mm	4 mm	HS3	0255 6 55	100
M6	60 mm	4 mm	HS3	0255 6 60	100
M6	70 mm	4 mm	HS3	0255 6 70	100
M6	75 mm	4 mm	HS3	0255 6 75	200
M6	80 mm	4 mm	HS3	0255 6 80	100
M6	90 mm	4 mm	HS3	0255 6 90	100
M8	6 mm	5.5 mm	HS4	0255 8 6	100
M8	8 mm	5.5 mm	HS4	0255 8 8	100
M8	10 mm	5.5 mm	HS4	0255 8 10	100
M8	12 mm	5.5 mm	HS4	0255 8 12	100
M8	14 mm	5.5 mm	HS4	0255 8 14	100
M8	16 mm	5.5 mm	HS4	0255 8 16	100
M8	20 mm	5.5 mm	HS4	0255 8 20	100
M8	22 mm	5.5 mm	HS4	0255 8 22	100
M8	25 mm	5.5 mm	HS4	0255 8 25	100
M8	30 mm	5.5 mm	HS4	0255 8 30	100
M8	35 mm	5.5 mm	HS4	0255 8 35	100
M8	40 mm	5.5 mm	HS4	0255 8 40	100
M8	45 mm	5.5 mm	HS4	0255 8 45	100
M8	50 mm	5.5 mm	HS4	0255 8 50	100
M8	55 mm	5.5 mm	HS4	0255 8 55	100
M8	60 mm	5.5 mm	HS4	0255 8 60	100
M8	65 mm	5.5 mm	HS4	0255 8 65	100
M8	70 mm	5.5 mm	HS4	0255 8 70	100
M8	75 mm	5.5 mm	HS4	0255 8 75	100
M8	80 mm	5.5 mm	HS4	0255 8 80	100
M8	85 mm	5.5 mm	HS4	0255 8 85	100
M8	90 mm	5.5 mm	HS4	0255 8 90	100
M8	100 mm	5.5 mm	HS4	0255 8 100	100
M8	110 mm	5.5 mm	HS4	0255 8 110	100
M8	120 mm	5.5 mm	HS4	0255 8 120	100
M10	6 mm	7 mm	HS5	0255 10 6	100
M10	8 mm	7 mm	HS5	0255 10 8	100
M10	10 mm	7 mm	HS5	0255 10 10	100
M10	12 mm	7 mm	HS5	0255 10 12	100
M10	14 mm	7 mm	HS5	0255 10 14	100
M10	16 mm	7 mm	HS5	0255 10 16	100
M10	18 mm	7 mm	HS5	0255 10 18	100
M10	20 mm	7 mm	HS5	0255 10 20	100
M10	25 mm	7 mm	HS5	0255 10 25	100
M10	30 mm	7 mm	HS5	0255 10 30	100
M10	35 mm	7 mm	HS5	0255 10 35	100
M10	40 mm	7 mm	HS5	0255 10 40	100
M10	45 mm	7 mm	HS5	0255 10 45	100
M10	50 mm	7 mm	HS5	0255 10 50	100
M10	55 mm	7 mm	HS5	0255 10 55	100
M10	60 mm	7 mm	HS5	0255 10 60	50
M10	65 mm	7 mm	HS5	0255 10 65	100
M10	70 mm	7 mm	HS5	0255 10 70	50

Thread type x nominal diameter (d ₁)	Length (l ₁)	Diameter of flat point (d ₂)	Internal drive (s ₁)	Art. no.	P. Qty.
M10	75 mm	7 mm	HS5	0255 10 75	50
M10	80 mm	7 mm	HS5	0255 10 80	50
M10	90 mm	7 mm	HS5	0255 10 90	50
M10	100 mm	7 mm	HS5	0255 10 100	50
M10	110 mm	7 mm	HS5	0255 10 110	50
M10	120 mm	7 mm	HS5	0255 10 120	50
M10	140 mm	7 mm	HS5	0255 10 140	25
M10	160 mm	7 mm	HS5	0255 10 160	10
M12	8 mm	8.5 mm	HS6	0255 12 08	100
M12	10 mm	8.5 mm	HS6	0255 12 10	100
M12	12 mm	8.5 mm	HS6	0255 12 12	100
M12	14 mm	8.5 mm	HS6	0255 12 14	100
M12	16 mm	8.5 mm	HS6	0255 12 16	100
M12	18 mm	8.5 mm	HS6	0255 12 18	100
M12	20 mm	8.5 mm	HS6	0255 12 20	100
M12	25 mm	8.5 mm	HS6	0255 12 25	100
M12	30 mm	8.5 mm	HS6	0255 12 30	100
M12	35 mm	8.5 mm	HS6	0255 12 35	100
M12	40 mm	8.5 mm	HS6	0255 12 40	100
M12	45 mm	8.5 mm	HS6	0255 12 45	100
M12	50 mm	8.5 mm	HS6	0255 12 50	100
M12	55 mm	8.5 mm	HS6	0255 12 55	100
M12	60 mm	8.5 mm	HS6	0255 12 60	100
M12	65 mm	8.5 mm	HS6	0255 12 65	100
M12	70 mm	8.5 mm	HS6	0255 12 70	50
M12	80 mm	8.5 mm	HS6	0255 12 80	50
M12	90 mm	8.5 mm	HS6	0255 12 90	50
M12	100 mm	8.5 mm	HS6	0255 12 100	50
M12	110 mm	8.5 mm	HS6	0255 12 110	50
M12	120 mm	8.5 mm	HS6	0255 12 120	10
M12	130 mm	8.5 mm	HS6	0255 12 130	10
M12	140 mm	8.5 mm	HS6	0255 12 140	20
M12	160 mm	8.5 mm	HS6	0255 12 160	50
M12	170 mm	8.5 mm	HS6	0255 12 170	50
M12	200 mm	8.5 mm	HS6	0255 12 200	25
M14	10 mm	10 mm	HS6	0255 14 10	500
M14	12 mm	10 mm	HS6	0255 14 12	250
M14	14 mm	10 mm	HS6	0255 14 14	200
M14	16 mm	10 mm	HS6	0255 14 16	200
M14	20 mm	10 mm	HS6	0255 14 20	25
M14	30 mm	10 mm	HS6	0255 14 30	200
M14	35 mm	10 mm	HS6	0255 14 35	200
M14	40 mm	10 mm	HS6	0255 14 40	200
M14	45 mm	10 mm	HS6	0255 14 45	100
M14	50 mm	10 mm	HS6	0255 14 50	100
M14	55 mm	10 mm	HS6	0255 14 55	100
M14	60 mm	10 mm	HS6	0255 14 60	100
M14	70 mm	10 mm	HS6	0255 14 70	50
M14	80 mm	10 mm	HS6	0255 14 80	50
M14	90 mm	10 mm	HS6	0255 14 90	50
M14	100 mm	10 mm	HS6	0255 14 100	50
M16	10 mm	12 mm	HS8	0255 16 10	100
M16	12 mm	12 mm	HS8	0255 16 12	100
M16	14 mm	12 mm	HS8	0255 16 14	100

Thread type x nominal diameter (d ₁)	Length (l ₁)	Diameter of flat point (d ₂)	Internal drive (s ₁)	Art. no.	P. Qty.
M16	16 mm	12 mm	HS8	0255 16 16	100
M16	18 mm	12 mm	HS8	0255 16 18	100
M16	20 mm	12 mm	HS8	0255 16 20	25
M16	25 mm	12 mm	HS8	0255 16 25	25
M16	30 mm	12 mm	HS8	0255 16 30	25
M16	35 mm	12 mm	HS8	0255 16 35	25
M16	40 mm	12 mm	HS8	0255 16 40	25
M16	45 mm	12 mm	HS8	0255 16 45	10
M16	50 mm	12 mm	HS8	0255 16 50	10
M16	55 mm	12 mm	HS8	0255 16 55	10
M16	60 mm	12 mm	HS8	0255 16 60	10
M16	70 mm	12 mm	HS8	0255 16 70	10
M16	80 mm	12 mm	HS8	0255 16 80	10
M16	90 mm	12 mm	HS8	0255 16 90	10
M16	100 mm	12 mm	HS8	0255 16 100	10/50
M16	110 mm	12 mm	HS8	0255 16 110	10
M16	120 mm	12 mm	HS8	0255 16 120	10
M16	130 mm	12 mm	HS8	0255 16 130	25
M16	190 mm	12 mm	HS8	0255 16 190	10
M16	220 mm	12 mm	HS8	0255 16 220	50
M18	20 mm	13 mm	HS10	0255 18 20	100
M18	25 mm	13 mm	HS10	0255 18 25	100
M18	30 mm	13 mm	HS10	0255 18 30	100
M18	35 mm	13 mm	HS10	0255 18 35	100
M18	40 mm	13 mm	HS10	0255 18 40	100
M18	45 mm	13 mm	HS10	0255 18 45	50
M18	50 mm	13 mm	HS10	0255 18 50	50
M18	60 mm	13 mm	HS10	0255 18 60	50
M18	70 mm	13 mm	HS10	0255 18 70	50
M18	80 mm	13 mm	HS10	0255 18 80	25
M18	90 mm	13 mm	HS10	0255 18 90	25
M18	100 mm	13 mm	HS10	0255 18 100	25
M20	20 mm	15 mm	HS10	0255 20 20	25
M20	25 mm	15 mm	HS10	0255 20 25	100
M20	30 mm	15 mm	HS10	0255 20 30	100
M20	35 mm	15 mm	HS10	0255 20 35	100
M20	40 mm	15 mm	HS10	0255 20 40	100
M20	45 mm	15 mm	HS10	0255 20 45	50
M20	50 mm	15 mm	HS10	0255 20 50	50
M20	55 mm	15 mm	HS10	0255 20 55	50
M20	60 mm	15 mm	HS10	0255 20 60	50
M20	70 mm	15 mm	HS10	0255 20 70	25
M20	75 mm	15 mm	HS10	0255 20 75	25
M20	80 mm	15 mm	HS10	0255 20 80	10
M20	90 mm	15 mm	HS10	0255 20 90	25
M20	100 mm	15 mm	HS10	0255 20 100	25
M20	110 mm	15 mm	HS10	0255 20 110	10
M20	130 mm	15 mm	HS10	0255 20 130	25
M20	185 mm	15 mm	HS10	0255 20 185	25
M22	20 mm	17 mm	HS12	0255 22 20	100
M22	25 mm	17 mm	HS12	0255 22 25	100
M22	30 mm	17 mm	HS12	0255 22 30	100
M22	35 mm	17 mm	HS12	0255 22 35	50
M22	40 mm	17 mm	HS12	0255 22 40	50

Thread type x nominal diameter (d ₁)	Length (l ₁)	Diameter of flat point (d ₂)	Internal drive (s ₁)	Art. no.	P. Qty.
M22	45 mm	17 mm	HS12	0255 22 45	50
M22	50 mm	17 mm	HS12	0255 22 50	50
M22	60 mm	17 mm	HS12	0255 22 60	25
M22	70 mm	17 mm	HS12	0255 22 70	25
M22	80 mm	17 mm	HS12	0255 22 80	25
M22	90 mm	17 mm	HS12	0255 22 90	25
M22	100 mm	17 mm	HS12	0255 22 100	25
M24	20 mm	18 mm	HS12	0255 24 20	100
M24	25 mm	18 mm	HS12	0255 24 25	100
M24	30 mm	18 mm	HS12	0255 24 30	50
M24	35 mm	18 mm	HS12	0255 24 35	50
M24	40 mm	18 mm	HS12	0255 24 40	50
M24	45 mm	18 mm	HS12	0255 24 45	50
M24	50 mm	18 mm	HS12	0255 24 50	25
M24	55 mm	18 mm	HS12	0255 24 55	25
M24	60 mm	18 mm	HS12	0255 24 60	25
M24	70 mm	18 mm	HS12	0255 24 70	25
M24	80 mm	18 mm	HS12	0255 24 80	25
M24	90 mm	18 mm	HS12	0255 24 90	25
M24	100 mm	18 mm	HS12	0255 24 100	25
M24	120 mm	18 mm	HS12	0255 24 120	1
M24	130 mm	18 mm	HS12	0255 24 130	25
M24	140 mm	18 mm	HS12	0255 24 140	25
M24	160 mm	18 mm	HS12	0255 24 160	1

Details/Application

Steel set screws are intended for use under compressive stress only (see also DIN EN ISO 898-5). Typical uses include clamping in an adjusting ring or applying pressure to a counterpart. Steel set screws are therefore extremely hard in order to ensure torsional strength in the hexagon socket during tightening/loosening.

Improper application is likely if set screws are welded, tightened and secured with nuts or subjected to bending. Any application of tensile stress is considered improper use and can result in malfunction.

Tip:

A2/A4 stainless steel set screws are not specially hardened and may be used for tensile loads.



Notice

Hardness class 45H corresponds to a hardness of 450 HV

ISO 4026 replaces DIN 913 | There is some similarity | Nominal diameters for M1.4, M1.8, M14, M18, M22 are removed |

Hardness classes for stainless steels introduced.