

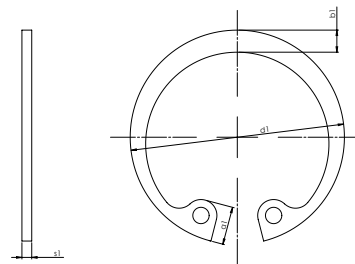
## Circlip for bore hole Standard design, shape J

**DIN 472 for bore holes, spring steel, phosphated and oiled**

Standards	DIN 472
Material	Spring steel
Surface	Phosphated
Design	Standard design
Form	J
RoHS-compliant	Yes



Illustration only



Suitable for holes	Suitable for groove diameter	Outer diameter (d <sub>1</sub> )	Eye width (a <sub>1</sub> )	Width (b <sub>1</sub> )	Thickness (s <sub>1</sub> )	Art. no.	P. Qty.
8 mm	8.4 mm	8.7 mm	2.4 mm	1.1 mm	0.8 mm	<b>0439 8</b>	100/2500
9 mm	9.4 mm	9.8 mm	2.5 mm	1.3 mm	0.8 mm	<b>0439 9</b>	100/1000
10 mm	10.4 mm	10.8 mm	3.2 mm	1.4 mm	1 mm	<b>0439 10</b>	100/3000
11 mm	11.4 mm	11.8 mm	3.3 mm	1.5 mm	1 mm	<b>0439 11</b>	100/1000
12 mm	12.5 mm	13 mm	3.4 mm	1.7 mm	1 mm	<b>0439 12</b>	100/1000
13 mm	13.6 mm	14.1 mm	3.6 mm	1.8 mm	1 mm	<b>0439 13</b>	100/1000
14 mm	14.6 mm	15.1 mm	3.7 mm	1.8 mm	1 mm	<b>0439 14</b>	100/1000
15 mm	15.7 mm	16.2 mm	3.7 mm	2 mm	1 mm	<b>0439 15</b>	100/1000
16 mm	16.8 mm	17.3 mm	3.8 mm	2 mm	1 mm	<b>0439 16</b>	100/1000
17 mm	17.8 mm	18.3 mm	3.9 mm	2.1 mm	1 mm	<b>0439 17</b>	100
18 mm	19 mm	19.5 mm	4.1 mm	2.2 mm	1 mm	<b>0439 18</b>	100/1000
19 mm	20 mm	20.5 mm	4.1 mm	2.2 mm	1 mm	<b>0439 19</b>	100/1000
20 mm	21 mm	21.5 mm	4.1 mm	2.3 mm	1 mm	<b>0439 20</b>	100/1000
21 mm	22 mm	22.5 mm	4.2 mm	2.4 mm	1 mm	<b>0439 21</b>	25
22 mm	23 mm	23.5 mm	4.2 mm	2.5 mm	1 mm	<b>0439 22</b>	25/100 /1000
23 mm	24.1 mm	24.6 mm	4.2 mm	2.5 mm	1.2 mm	<b>0439 23</b>	25/1000
24 mm	25.2 mm	25.9 mm	4.3 mm	2.6 mm	1.2 mm	<b>0439 24</b>	25/100 /500
25 mm	26.2 mm	26.9 mm	4.5 mm	2.7 mm	1.2 mm	<b>0439 25</b>	100/1000
26 mm	27.2 mm	27.9 mm	4.7 mm	2.8 mm	1.2 mm	<b>0439 26</b>	25/100 /500
27 mm	28.4 mm	29.1 mm	4.7 mm	2.9 mm	1.2 mm	<b>0439 27</b>	25/500
28 mm	29.4 mm	30.1 mm	4.8 mm	2.9 mm	1.2 mm	<b>0439 28</b>	25/100

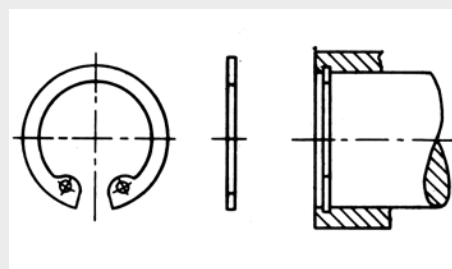
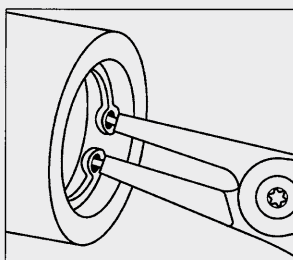
Suitable for holes	Suitable for groove diameter	Outer diameter (d <sub>1</sub> )	Eye width (a <sub>1</sub> )	Width (b <sub>1</sub> )	Thickness (s <sub>1</sub> )	Art. no.	P. Qty.
29 mm	30.4 mm	31.1 mm	4.8 mm	3 mm	1.2 mm	<b>0439 29</b>	25/1000
30 mm	31.4 mm	32.1 mm	4.8 mm	3 mm	1.2 mm	<b>0439 30</b>	25/100 /1000
31 mm	32.7 mm	33.4 mm	5.2 mm	3.1 mm	1.2 mm	<b>0439 31</b>	25/500
32 mm	33.7 mm	34.4 mm	5.4 mm	3.2 mm	1.2 mm	<b>0439 32</b>	25/100 /500
33 mm	34.7 mm	35.5 mm	5.4 mm	3.3 mm	1.2 mm	<b>0439 33</b>	25
34 mm	35.7 mm	36.5 mm	5.4 mm	3.3 mm	1.5 mm	<b>0439 34</b>	25/100
35 mm	37 mm	37.8 mm	5.4 mm	3.4 mm	1.5 mm	<b>0439 35</b>	25/100
36 mm	38 mm	38.8 mm	5.4 mm	3.5 mm	1.5 mm	<b>0439 36</b>	25/100
37 mm	39 mm	39.8 mm	5.5 mm	3.6 mm	1.5 mm	<b>0439 37</b>	25/100
38 mm	40 mm	40.8 mm	5.5 mm	3.7 mm	1.5 mm	<b>0439 38</b>	25/100
39 mm	41 mm	42 mm	5.6 mm	3.8 mm	1.5 mm	<b>0439 39</b>	25
40 mm	42.5 mm	43.5 mm	5.8 mm	3.9 mm	1.75 mm	<b>0439 40</b>	25/50 /100
41 mm	43.5 mm	44.5 mm	5.9 mm	4 mm	1.75 mm	<b>0439 41</b>	25/100
42 mm	44.5 mm	45.5 mm	5.9 mm	4.1 mm	1.75 mm	<b>0439 42</b>	25/50 /100
43 mm	45.5 mm	46.5 mm	5.9 mm	4.2 mm	1.75 mm	<b>0439 43</b>	100
44 mm	46.5 mm	47.5 mm	6 mm	4.2 mm	1.75 mm	<b>0439 44</b>	25
45 mm	47.5 mm	48.5 mm	6.2 mm	4.3 mm	1.75 mm	<b>0439 45</b>	25/100
46 mm	48.5 mm	49.5 mm	6.3 mm	4.4 mm	1.75 mm	<b>0439 46</b>	25/200
47 mm	49.5 mm	50.5 mm	6.4 mm	4.4 mm	1.75 mm	<b>0439 47</b>	25/50 /100
48 mm	50.5 mm	51.5 mm	6.4 mm	4.5 mm	1.75 mm	<b>0439 48</b>	25/100
50 mm	53 mm	54.2 mm	6.5 mm	4.6 mm	2 mm	<b>0439 50</b>	10/50 /100
51 mm	54 mm	55.2 mm	6.5 mm	4.7 mm	2 mm	<b>0439 51</b>	10
52 mm	55 mm	56.2 mm	6.7 mm	4.7 mm	2 mm	<b>0439 52</b>	10/50 /100
53 mm	56 mm	57.2 mm	6.7 mm	4.9 mm	2 mm	<b>0439 53</b>	100
54 mm	57 mm	58.2 mm	6.7 mm	5 mm	2 mm	<b>0439 54</b>	10/100
55 mm	58 mm	59.2 mm	6.8 mm	5 mm	2 mm	<b>0439 55</b>	10/50 /100
56 mm	59 mm	60.2 mm	6.8 mm	5.1 mm	2 mm	<b>0439 56</b>	10/100
57 mm	60 mm	61.2 mm	6.8 mm	5.1 mm	2 mm	<b>0439 57</b>	10/100
58 mm	61 mm	62.2 mm	6.9 mm	5.2 mm	2 mm	<b>0439 58</b>	10/100
60 mm	63 mm	64.2 mm	7.3 mm	5.4 mm	2 mm	<b>0439 60</b>	10/100
62 mm	65 mm	66.2 mm	7.3 mm	5.5 mm	2 mm	<b>0439 62</b>	10/50 /100
63 mm	66 mm	67.2 mm	7.3 mm	5.6 mm	2 mm	<b>0439 63</b>	10
64 mm	67 mm	68.2 mm	7.4 mm	5.7 mm	2 mm	<b>0439 64</b>	100
65 mm	68 mm	69.2 mm	7.6 mm	5.8 mm	2.5 mm	<b>0439 65</b>	10/50
67 mm	70 mm	71.5 mm	7.7 mm	6 mm	2.5 mm	<b>0439 67</b>	10
68 mm	71 mm	72.5 mm	7.8 mm	6.1 mm	2.5 mm	<b>0439 68</b>	10/50
70 mm	73 mm	74.5 mm	7.8 mm	6.2 mm	2.5 mm	<b>0439 70</b>	10/100
72 mm	75 mm	76.5 mm	7.8 mm	6.4 mm	2.5 mm	<b>0439 72</b>	10/50
72 mm	75 mm	76.5 mm	9.2 mm	6.4 mm	2 mm	<b>0439 72 2</b>	100
75 mm	78 mm	79.5 mm	7.8 mm	6.6 mm	2.5 mm	<b>0439 75</b>	10/50
78 mm	81 mm	82.5 mm	8.5 mm	6.8 mm	2.5 mm	<b>0439 78</b>	100
80 mm	83.5 mm	85.5 mm	8.5 mm	7 mm	2.5 mm	<b>0439 80</b>	10/50
82 mm	85.5 mm	87.5 mm	8.5 mm	7 mm	2.5 mm	<b>0439 82</b>	10/100
85 mm	88.5 mm	90.5 mm	8.6 mm	7.2 mm	3 mm	<b>0439 85</b>	10/50
88 mm	91.5 mm	93.5 mm	8.6 mm	7.4 mm	3 mm	<b>0439 88</b>	50

Suitable for holes	Suitable for groove diameter	Outer diameter (d <sub>1</sub> )	Eye width (a <sub>1</sub> )	Width (b <sub>1</sub> )	Thickness (s <sub>1</sub> )	Art. no.	P. Qty.
90 mm	93.5 mm	95.5 mm	8.6 mm	7.6 mm	3 mm	<b>0439 90</b>	10/50
92 mm	95.5 mm	97.5 mm	8.7 mm	7.8 mm	3 mm	<b>0439 92</b>	50
95 mm	98.5 mm	100.5 mm	8.8 mm	8.1 mm	3 mm	<b>0439 95</b>	10/50
97 mm	100.5 mm	103.5 mm	9 mm	8.3 mm	3 mm	<b>0439 97</b>	50
98 mm	101.5 mm	103.5 mm	9 mm	8.3 mm	3 mm	<b>0439 98</b>	50
100 mm	103.5 mm	105.5 mm	9.2 mm	8.4 mm	3 mm	<b>0439 100</b>	10/50
102 mm	106 mm	108 mm	9.5 mm	8.5 mm	4 mm	<b>0439 102</b>	25
105 mm	109 mm	112 mm	9.5 mm	8.7 mm	4 mm	<b>0439 105</b>	25
107 mm	111 mm	115 mm	9.5 mm	8.9 mm	4 mm	<b>0439 107</b>	25
108 mm	112 mm	115 mm	9.5 mm	8.9 mm	4 mm	<b>0439 108</b>	25
110 mm	114 mm	117 mm	10.4 mm	9 mm	4 mm	<b>0439 110</b>	10/25
112 mm	116 mm	119 mm	10.5 mm	9.1 mm	4 mm	<b>0439 112</b>	25
115 mm	119 mm	122 mm	10.5 mm	9.3 mm	4 mm	<b>0439 115</b>	25
117 mm	121 mm	125 mm	10.7 mm	9.6 mm	4 mm	<b>0439 117</b>	40
118 mm	122 mm	122 mm	10.7 mm	9.6 mm	4 mm	<b>0439 118</b>	25
120 mm	124 mm	127 mm	11 mm	9.7 mm	4 mm	<b>0439 120</b>	25
122 mm	126 mm	129 mm	11 mm	9.8 mm	4 mm	<b>0439 122</b>	25
125 mm	129 mm	132 mm	11 mm	9.8 mm	4 mm	<b>0439 125</b>	25
127 mm	131 mm	132 mm	11 mm	10 mm	4 mm	<b>0439 127</b>	25
128 mm	132 mm	135 mm	11 mm	10.2 mm	4 mm	<b>0439 128</b>	25
130 mm	134 mm	137 mm	11 mm	10.2 mm	4 mm	<b>0439 130</b>	25
135 mm	139 mm	142 mm	11.2 mm	10.5 mm	4 mm	<b>0439 135</b>	25
137 mm	141 mm	145 mm	11.2 mm	10.6 mm	4 mm	<b>0439 137</b>	25
138 mm	142 mm	145 mm	11.2 mm	10.6 mm	4 mm	<b>0439 138</b>	25
140 mm	144 mm	147 mm	11.2 mm	10.7 mm	4 mm	<b>0439 140</b>	25
142 mm	146 mm	149 mm	11.3 mm	10.8 mm	4 mm	<b>0439 142</b>	25
145 mm	149 mm	152 mm	11.4 mm	10.9 mm	4 mm	<b>0439 145</b>	25
148 mm	152 mm	155 mm	11.8 mm	11.1 mm	4 mm	<b>0439 148</b>	25
150 mm	155 mm	158 mm	12 mm	11.2 mm	4 mm	<b>0439 150</b>	25
152 mm	157 mm	161 mm	12 mm	11.3 mm	4 mm	<b>0439 152</b>	25
155 mm	160 mm	164 mm	12 mm	11.4 mm	4 mm	<b>0439 155</b>	40
160 mm	165 mm	169 mm	13 mm	11.6 mm	4 mm	<b>0439 160</b>	40
165 mm	170 mm	174.5 mm	13 mm	11.8 mm	4 mm	<b>0439 165</b>	25
167 mm	172 mm	177.5 mm	13.5 mm	12.1 mm	4 mm	<b>0439 167</b>	1
168 mm	173 mm	177.5 mm	13.5 mm	12.1 mm	4 mm	<b>0439 168</b>	25
170 mm	175 mm	179.5 mm	13.5 mm	12.2 mm	4 mm	<b>0439 170</b>	25
175 mm	180 mm	184.5 mm	13.5 mm	12.7 mm	4 mm	<b>0439 175</b>	25
180 mm	185 mm	189.5 mm	14.2 mm	13.2 mm	4 mm	<b>0439 180</b>	25
185 mm	190 mm	194.5 mm	14.2 mm	13.7 mm	4 mm	<b>0439 185</b>	25
190 mm	195 mm	199.5 mm	14.2 mm	13.8 mm	4 mm	<b>0439 190</b>	25
195 mm	200 mm	204.5 mm	14.2 mm	13.8 mm	4 mm	<b>0439 195</b>	25
200 mm	205 mm	209.5 mm	14.2 mm	14 mm	4 mm	<b>0439 200</b>	25
205 mm	211 mm	217 mm	14.2 mm	14 mm	5 mm	<b>0439 205</b>	25
210 mm	216 mm	222 mm	14.2 mm	14 mm	5 mm	<b>0439 210</b>	25
215 mm	221 mm	227 mm	14.2 mm	14 mm	5 mm	<b>0439 215</b>	25
220 mm	226 mm	232 mm	14.2 mm	14 mm	3 mm	<b>0439 220 3</b>	10
220 mm	226 mm	232 mm	14.2 mm	14 mm	5 mm	<b>0439 220</b>	25
225 mm	231 mm	237 mm	14.2 mm	14 mm	5 mm	<b>0439 225</b>	20
230 mm	236 mm	242 mm	14.2 mm	14 mm	5 mm	<b>0439 230</b>	10
235 mm	241 mm	247 mm	14.2 mm	14 mm	5 mm	<b>0439 235</b>	25
240 mm	246 mm	252 mm	14.2 mm	14 mm	5 mm	<b>0439 240</b>	25
245 mm	251 mm	257 mm	14.2 mm	14 mm	5 mm	<b>0439 245</b>	25
250 mm	256 mm	262 mm	14.2 mm	14 mm	5 mm	<b>0439 250</b>	25

Suitable for holes	Suitable for groove diameter	Outer diameter (d <sub>1</sub> )	Eye width (a <sub>1</sub> )	Width (b <sub>1</sub> )	Thickness (s <sub>1</sub> )	Art. no.	P. Qty.
255 mm	263 mm	270 mm	16.2 mm	16 mm	5 mm	<b>0439 255</b>	25
260 mm	268 mm	275 mm	16.2 mm	16 mm	5 mm	<b>0439 260</b>	25
265 mm	273 mm	280 mm	16.2 mm	16 mm	5 mm	<b>0439 265</b>	25
270 mm	278 mm	285 mm	16.2 mm	16 mm	5 mm	<b>0439 270</b>	10
275 mm	283 mm	290 mm	16.2 mm	16 mm	5 mm	<b>0439 275</b>	10
280 mm	288 mm	295 mm	16.2 mm	16 mm	5 mm	<b>0439 280</b>	25
285 mm	293 mm	300 mm	16.2 mm	16 mm	5 mm	<b>0439 285</b>	25
290 mm	298 mm	305 mm	16.2 mm	16 mm	5 mm	<b>0439 290</b>	20
295 mm	303 mm	310 mm	16.2 mm	16 mm	5 mm	<b>0439 295</b>	25
300 mm	308 mm	315 mm	16.2 mm	16 mm	5 mm	<b>0439 300</b>	25
305 mm	315 mm	322 mm	20.2 mm	20 mm	6 mm	<b>0439 305</b>	1
310 mm	320 mm	327 mm	20.2 mm	20 mm	6 mm	<b>0439 310</b>	1
315 mm	325 mm	332 mm	20.2 mm	20 mm	6 mm	<b>0439 315</b>	1
320 mm	330 mm	337 mm	20.2 mm	20 mm	6 mm	<b>0439 320</b>	1
330 mm	340 mm	347 mm	20.2 mm	20 mm	6 mm	<b>0439 330</b>	1
335 mm	345 mm	352 mm	20.2 mm	20 mm	6 mm	<b>0439 335</b>	1
340 mm	350 mm	357 mm		20 mm	6 mm	<b>0439 340</b>	10
350 mm	360 mm	367 mm	20.2 mm	20 mm	6 mm	<b>0439 350</b>	1
360 mm	370 mm	377 mm	20.2 mm	20 mm	6 mm	<b>0439 360</b>	1
370 mm	380 mm	387 mm	20.2 mm	20 mm	6 mm	<b>0439 370</b>	1
380 mm	390 mm	397 mm	20.2 mm	20 mm	6 mm	<b>0439 380</b>	1
390 mm	400 mm	407 mm	20.2 mm	20 mm	6 mm	<b>0439 390</b>	1
400 mm	410 mm	417 mm	20.2 mm	20 mm	6 mm	<b>0439 400</b>	1
410 mm	422 mm	430 mm	26.2 mm	26 mm	6 mm	<b>0439 410</b>	1
420 mm	432 mm	440 mm	26.2 mm	26 mm	6 mm	<b>0439 420</b>	1
430 mm	442 mm	450 mm	26.2 mm	26 mm	6 mm	<b>0439 430</b>	1
440 mm	452 mm	460 mm	26.2 mm	26 mm	6 mm	<b>0439 440</b>	1
450 mm	462 mm	470 mm	26.2 mm	26 mm	6 mm	<b>0439 450</b>	1
460 mm	472 mm	480 mm	26.2 mm	26 mm	6 mm	<b>0439 460</b>	1
470 mm	482 mm	490 mm	26.2 mm	26 mm	7 mm	<b>0439 470</b>	1
480 mm	492 mm	500 mm	26.2 mm	26 mm	7 mm	<b>0439 480</b>	1
490 mm	502 mm	510 mm	26.2 mm	26 mm	7 mm	<b>0439 490</b>	1
500 mm	512 mm	520 mm	26.2 mm	26 mm	7 mm	<b>0439 500</b>	1
520 mm	534 mm	545 mm	26.2 mm	26 mm	7 mm	<b>0439 520</b>	5
540 mm	554 mm	565 mm	26.2 mm	26 mm	7 mm	<b>0439 540</b>	1
580 mm	594 mm	605 mm	26.2 mm	26 mm	7 mm	<b>0439 580</b>	1

Can be stored in ORSY® system

## Instructions



<b>Related products</b>	<b>Art. no.</b>
Circlips for bores assortment	<b>5964 043 900</b>