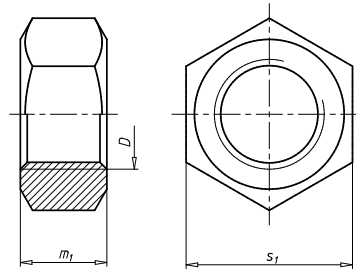


Hexagon nut with fine thread

DIN 934, steel I81, galvanised blue passivated (A2K)

Standards	DIN 934
Material	Steel
Property class	I81
Surface	Zinc plated
RoHS-compliant	Yes



Thread type x nominal diameter x pitch (D)	Height (m ₁)	External drive (s ₁)	Art. no.	P. Qty.
M6 x 0.75	4.9 mm	WS10	0317 6 075	500
M8 x 0.75	6.8 mm	WS13	0317 8 075	1000
M8 x 1	6.5 mm	WS13	0317 8 113	100
M10 x 0.75	8 mm	WS17	0317 10 075	200
M10 x 1	8 mm	WS17	0317 10 1	100
M10 x 1.25	8 mm	WS17	0317 10 125	100
M12 x 1	10 mm	WS19	0317 12 1	250
M12 x 1.25	10 mm	WS19	0317 12 125	100
M12 x 1.5	10 mm	WS19	0317 12 15	100
M14 x 1.25	11 mm	WS22	0317 14 125	200
M14 x 1.5	11 mm	WS22	0317 14 15	50/100
M16 x 1	13 mm	WS24	0317 16 1	200
M16 x 1.5	13 mm	WS24	0317 16 15	50/100
M18 x 1.5	15 mm	WS27	0317 18 15	25/100
M20 x 1.5	16 mm	WS30	0317 20 15	25
M20 x 2	16 mm	WS30	0317 20 2	100
M22 x 1.5	18 mm	WS32	0317 22 15	25
M24 x 1.5	19 mm	WS36	0317 24 15	25
M24 x 2	19 mm	WS36	0317 24 2	25
M27 x 1.5	22 mm	WS41	0317 27 15	25
M27 x 2	22 mm	WS41	0317 27 2	25
M30 x 1.5	24 mm	WS46	0317 30 15	25
M30 x 2	24 mm	WS46	0317 30 2	25
M39 x 1.5	31.8 mm	WS60	0317 39 15	5

Thread type x nominal diameter x pitch (D)	Height (m ₁)	External drive (s ₁)	Art. no.	P. Qty.
M39 x 3	31.8 mm	WS60	0317 39 3	10
M42 x 1.5	34 mm	WS65	0317 42 15	10
M42 x 3	34 mm	WS65	0317 42 3	10
M48 x 3	38 mm	WS75	0317 48 3	5
M64 x 4	51 mm	WS95	0317 64 4	1
M80 x 6	64 mm	WS115	0317 80 6	1
M100 x 4	80 mm	WS145	0317 100 4	1

Notice

Hexagonal nuts complying with DIN 934 cannot support test loads as per DIN EN ISO 898-2.

- The strength class designation has two vertical bars added before and after the strength code to differentiate.

DIN 934 has been withdrawn and replaced by ISO 4032/8673. There is no similarity (nominal Ø changed | Some nut heights changed | Width across flats changed for M10, M12, M14, M22 | ISO 4032 for standard thread | ISO 8673 for fine thread).