

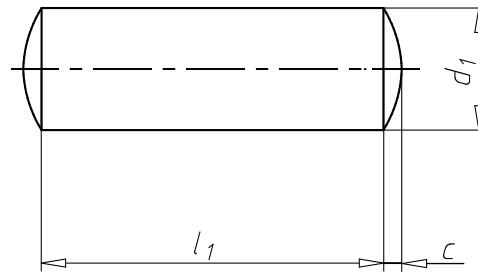
Straight pin, unhardened

DIN 7, stainless steel, A1, plain

| | |
|-----------------|--------------------|
| Standards | DIN 7 |
| Material | Stainless steel A1 |
| Design | Unhardened |
| Surface | Plain |
| Tolerance class | m6 |
| RoHS-compliant | Yes |



Illustration only



| Nominal diameter (d ₁) | Length (l ₁) | Height of flat point (c) | Art. no. | P. Qty. |
|------------------------------------|--------------------------|--------------------------|--------------------|----------|
| 1 mm | 4 mm | 0.15 mm | 0267 01 4 | 1000 |
| 1 mm | 5 mm | 0.15 mm | 0267 01 5 | 1000 |
| 1 mm | 6 mm | 0.15 mm | 0267 01 6 | 1000 |
| 1 mm | 8 mm | 0.15 mm | 0267 01 8 | 1000 |
| 1 mm | 10 mm | 0.15 mm | 0267 01 10 | 1000 |
| 1 mm | 12 mm | 0.15 mm | 0267 01 12 | 1000 |
| 1 mm | 16 mm | 0.15 mm | 0267 01 16 | 500 |
| 1.5 mm | 3 mm | 0.23 mm | 0267 015 3 | 1000 |
| 1.5 mm | 4 mm | 0.23 mm | 0267 015 4 | 1000 |
| 1.5 mm | 5 mm | 0.23 mm | 0267 015 5 | 1000 |
| 1.5 mm | 6 mm | 0.23 mm | 0267 015 6 | 1000 |
| 1.5 mm | 8 mm | 0.23 mm | 0267 015 8 | 1000 |
| 1.5 mm | 12 mm | 0.23 mm | 0267 015 12 | 1000 |
| 1.5 mm | 14 mm | 0.23 mm | 0267 015 14 | 1000 |
| 1.5 mm | 16 mm | 0.23 mm | 0267 015 16 | 1000 |
| 1.5 mm | 18 mm | 0.23 mm | 0267 015 18 | 1000 |
| 1.5 mm | 20 mm | 0.23 mm | 0267 015 20 | 1000 |
| 2 mm | 4 mm | 0.3 mm | 0267 02 4 | 1000 |
| 2 mm | 5 mm | 0.3 mm | 0267 02 5 | 1000 |
| 2 mm | 6 mm | 0.3 mm | 0267 02 6 | 1000 |
| 2 mm | 8 mm | 0.3 mm | 0267 02 8 | 500/1000 |
| 2 mm | 10 mm | 0.3 mm | 0267 02 10 | 1000 |
| 2 mm | 12 mm | 0.3 mm | 0267 02 12 | 1000 |
| 2 mm | 14 mm | 0.3 mm | 0267 02 14 | 1000 |
| 2 mm | 16 mm | 0.3 mm | 0267 02 16 | 1000 |
| 2 mm | 18 mm | 0.3 mm | 0267 02 18 | 1000 |
| 2 mm | 20 mm | 0.3 mm | 0267 02 20 | 1000 |
| 2 mm | 24 mm | 0.3 mm | 0267 02 24 | 1000 |
| 2 mm | 26 mm | 0.3 mm | 0267 02 26 | 1000 |
| 2 mm | 28 mm | 0.3 mm | 0267 02 28 | 1000 |
| 2 mm | 32 mm | 0.3 mm | 0267 02 32 | 1000 |
| 2 mm | 40 mm | 0.3 mm | 0267 02 40 | 250 |
| 2.5 mm | 4 mm | 0.4 mm | 0267 025 4 | 500 |

| Nominal diameter (d ₁) | Length (l ₁) | Height of flat point (c) | Art. no. | P. Qty. |
|------------------------------------|--------------------------|--------------------------|--------------------|----------|
| 2.5 mm | 5 mm | 0.4 mm | 0267 025 5 | 500 |
| 2.5 mm | 6 mm | 0.4 mm | 0267 025 6 | 500/1000 |
| 2.5 mm | 8 mm | 0.4 mm | 0267 025 8 | 1000 |
| 2.5 mm | 10 mm | 0.4 mm | 0267 025 10 | 500 |
| 2.5 mm | 12 mm | 0.4 mm | 0267 025 12 | 500 |
| 2.5 mm | 14 mm | 0.4 mm | 0267 025 14 | 500 |
| 2.5 mm | 20 mm | 0.4 mm | 0267 025 20 | 500/1000 |
| 2.5 mm | 24 mm | 0.4 mm | 0267 025 24 | 500 |
| 2.5 mm | 25 mm | 0.4 mm | 0267 025 25 | 1000 |
| 2.5 mm | 28 mm | 0.4 mm | 0267 025 28 | 500 |
| 2.5 mm | 30 mm | 0.4 mm | 0267 025 30 | 200 |
| 2.5 mm | 40 mm | 0.4 mm | 0267 025 40 | 500 |
| 3 mm | 4 mm | 0.45 mm | 0267 03 4 | 500 |
| 3 mm | 5 mm | 0.45 mm | 0267 03 5 | 1000 |
| 3 mm | 6 mm | 0.45 mm | 0267 03 6 | 500 |
| 3 mm | 8 mm | 0.45 mm | 0267 03 8 | 1000 |
| 3 mm | 10 mm | 0.45 mm | 0267 03 10 | 500/1000 |
| 3 mm | 12 mm | 0.45 mm | 0267 03 12 | 500 |
| 3 mm | 14 mm | 0.45 mm | 0267 03 14 | 1000 |
| 3 mm | 16 mm | 0.45 mm | 0267 03 16 | 500 |
| 3 mm | 18 mm | 0.45 mm | 0267 03 18 | 1000 |
| 3 mm | 20 mm | 0.45 mm | 0267 03 20 | 1000 |
| 3 mm | 24 mm | 0.45 mm | 0267 03 24 | 500 |
| 3 mm | 28 mm | 0.45 mm | 0267 03 28 | 500/1000 |
| 3 mm | 30 mm | 0.45 mm | 0267 03 30 | 500 |
| 3 mm | 32 mm | 0.45 mm | 0267 03 32 | 500 |
| 3 mm | 36 mm | 0.45 mm | 0267 03 36 | 500 |
| 3 mm | 45 mm | 0.45 mm | 0267 03 45 | 500 |
| 3 mm | 50 mm | 0.45 mm | 0267 03 50 | 200 |
| 4 mm | 5 mm | 0.6 mm | 0267 04 5 | 500 |
| 4 mm | 6 mm | 0.6 mm | 0267 04 6 | 500/1500 |
| 4 mm | 8 mm | 0.6 mm | 0267 04 8 | 500 |
| 4 mm | 10 mm | 0.6 mm | 0267 04 10 | 500 |
| 4 mm | 12 mm | 0.6 mm | 0267 04 12 | 500 |
| 4 mm | 14 mm | 0.6 mm | 0267 04 14 | 500/1000 |
| 4 mm | 16 mm | 0.6 mm | 0267 04 16 | 500 |
| 4 mm | 18 mm | 0.6 mm | 0267 04 18 | 500 |
| 4 mm | 20 mm | 0.6 mm | 0267 04 20 | 500 |
| 4 mm | 22 mm | 0.6 mm | 0267 04 22 | 500 |
| 4 mm | 24 mm | 0.6 mm | 0267 04 24 | 1000 |
| 4 mm | 28 mm | 0.6 mm | 0267 04 28 | 500 |
| 4 mm | 30 mm | 0.6 mm | 0267 04 30 | 200 |
| 4 mm | 32 mm | 0.6 mm | 0267 04 32 | 500 |
| 4 mm | 36 mm | 0.6 mm | 0267 04 36 | 500 |
| 4 mm | 40 mm | 0.6 mm | 0267 04 40 | 500 |
| 4 mm | 48 mm | 0.6 mm | 0267 04 48 | 1 |
| 4 mm | 50 mm | 0.6 mm | 0267 04 50 | 500 |
| 4 mm | 60 mm | 0.6 mm | 0267 04 60 | 500 |
| 5 mm | 6 mm | 0.75 mm | 0267 05 6 | 500 |
| 5 mm | 8 mm | 0.75 mm | 0267 05 8 | 1000 |
| 5 mm | 10 mm | 0.75 mm | 0267 05 10 | 500/1000 |
| 5 mm | 12 mm | 0.75 mm | 0267 05 12 | 200 |
| 5 mm | 14 mm | 0.75 mm | 0267 05 14 | 500 |
| 5 mm | 16 mm | 0.75 mm | 0267 05 16 | 200 |

| Nominal diameter (d ₁) | Length (l ₁) | Height of flat point (c) | Art. no. | P. Qty. |
|------------------------------------|--------------------------|--------------------------|--------------------|----------|
| 5 mm | 18 mm | 0.75 mm | 0267 05 18 | 500 |
| 5 mm | 20 mm | 0.75 mm | 0267 05 20 | 200/500 |
| 5 mm | 24 mm | 0.75 mm | 0267 05 24 | 500 |
| 5 mm | 26 mm | 0.75 mm | 0267 05 26 | 100 |
| 5 mm | 28 mm | 0.75 mm | 0267 05 28 | 500 |
| 5 mm | 30 mm | 0.75 mm | 0267 05 30 | 1000 |
| 5 mm | 32 mm | 0.75 mm | 0267 05 32 | 500 |
| 5 mm | 36 mm | 0.75 mm | 0267 05 36 | 500 |
| 5 mm | 40 mm | 0.75 mm | 0267 05 40 | 500 |
| 5 mm | 50 mm | 0.75 mm | 0267 05 50 | 500 |
| 5 mm | 60 mm | 0.75 mm | 0267 05 60 | 100 |
| 5 mm | 65 mm | 0.75 mm | 0267 05 65 | 1000 |
| 5 mm | 70 mm | 0.75 mm | 0267 05 70 | 100 |
| 6 mm | 6 mm | 0.9 mm | 0267 06 6 | 100 |
| 6 mm | 8 mm | 0.9 mm | 0267 06 8 | 500 |
| 6 mm | 10 mm | 0.9 mm | 0267 06 10 | 200 |
| 6 mm | 12 mm | 0.9 mm | 0267 06 12 | 100 |
| 6 mm | 14 mm | 0.9 mm | 0267 06 14 | 500 |
| 6 mm | 16 mm | 0.9 mm | 0267 06 16 | 100/500 |
| 6 mm | 18 mm | 0.9 mm | 0267 06 18 | 100/1000 |
| 6 mm | 20 mm | 0.9 mm | 0267 06 20 | 100 |
| 6 mm | 24 mm | 0.9 mm | 0267 06 24 | 100 |
| 6 mm | 28 mm | 0.9 mm | 0267 06 28 | 100 |
| 6 mm | 30 mm | 0.9 mm | 0267 06 30 | 100 |
| 6 mm | 32 mm | 0.9 mm | 0267 06 32 | 100 |
| 6 mm | 36 mm | 0.9 mm | 0267 06 36 | 100 |
| 6 mm | 40 mm | 0.9 mm | 0267 06 40 | 100 |
| 6 mm | 45 mm | 0.9 mm | 0267 06 45 | 100 |
| 6 mm | 50 mm | 0.9 mm | 0267 06 50 | 100 |
| 6 mm | 55 mm | 0.9 mm | 0267 06 55 | 100 |
| 6 mm | 60 mm | 0.9 mm | 0267 06 60 | 100 |
| 6 mm | 80 mm | 0.9 mm | 0267 06 80 | 100 |
| 8 mm | 8 mm | 1.2 mm | 0267 08 8 | 100 |
| 8 mm | 10 mm | 1.2 mm | 0267 08 10 | 100 |
| 8 mm | 12 mm | 1.2 mm | 0267 08 12 | 200 |
| 8 mm | 14 mm | 1.2 mm | 0267 08 14 | 100 |
| 8 mm | 16 mm | 1.2 mm | 0267 08 16 | 100 |
| 8 mm | 18 mm | 1.2 mm | 0267 08 18 | 200 |
| 8 mm | 20 mm | 1.2 mm | 0267 08 20 | 100 |
| 8 mm | 22 mm | 1.2 mm | 0267 08 22 | 50 |
| 8 mm | 24 mm | 1.2 mm | 0267 08 24 | 100 |
| 8 mm | 32 mm | 1.2 mm | 0267 08 32 | 100 |
| 8 mm | 36 mm | 1.2 mm | 0267 08 36 | 100 |
| 8 mm | 40 mm | 1.2 mm | 0267 08 40 | 100 |
| 8 mm | 45 mm | 1.2 mm | 0267 08 45 | 100 |
| 8 mm | 50 mm | 1.2 mm | 0267 08 50 | 100 |
| 8 mm | 55 mm | 1.2 mm | 0267 08 55 | 100 |
| 8 mm | 60 mm | 1.2 mm | 0267 08 60 | 100 |
| 8 mm | 70 mm | 1.2 mm | 0267 08 70 | 100 |
| 8 mm | 90 mm | 1.2 mm | 0267 08 90 | 100 |
| 8 mm | 100 mm | 1.2 mm | 0267 08 100 | 100 |
| 10 mm | 10 mm | 1.5 mm | 0267 010 10 | 200 |
| 10 mm | 12 mm | 1.5 mm | 0267 010 12 | 100 |
| 10 mm | 14 mm | 1.5 mm | 0267 010 14 | 200 |

| Nominal diameter (d ₁) | Length (l ₁) | Height of flat point (c) | Art. no. | P. Qty. |
|------------------------------------|--------------------------|--------------------------|---------------------|---------|
| 10 mm | 16 mm | 1.5 mm | 0267 010 16 | 100 |
| 10 mm | 18 mm | 1.5 mm | 0267 010 18 | 100 |
| 10 mm | 20 mm | 1.5 mm | 0267 010 20 | 100 |
| 10 mm | 24 mm | 1.5 mm | 0267 010 24 | 100 |
| 10 mm | 26 mm | 1.5 mm | 0267 010 26 | 100 |
| 10 mm | 28 mm | 1.5 mm | 0267 010 28 | 100 |
| 10 mm | 30 mm | 1.5 mm | 0267 010 30 | 200 |
| 10 mm | 36 mm | 1.5 mm | 0267 010 36 | 100 |
| 10 mm | 40 mm | 1.5 mm | 0267 010 40 | 100 |
| 10 mm | 45 mm | 1.5 mm | 0267 010 45 | 100 |
| 10 mm | 50 mm | 1.5 mm | 0267 010 50 | 100 |
| 10 mm | 60 mm | 1.5 mm | 0267 010 60 | 100 |
| 10 mm | 70 mm | 1.5 mm | 0267 010 70 | 100 |
| 10 mm | 90 mm | 1.5 mm | 0267 010 90 | 100 |
| 12 mm | 18 mm | 1.8 mm | 0267 012 18 | 50 |
| 12 mm | 20 mm | 1.8 mm | 0267 012 20 | 50 |
| 12 mm | 24 mm | 1.8 mm | 0267 012 24 | 50 |
| 12 mm | 28 mm | 1.8 mm | 0267 012 28 | 50 |
| 12 mm | 30 mm | 1.8 mm | 0267 012 30 | 100 |
| 12 mm | 32 mm | 1.8 mm | 0267 012 32 | 50/100 |
| 12 mm | 40 mm | 1.8 mm | 0267 012 40 | 100 |
| 12 mm | 45 mm | 1.8 mm | 0267 012 45 | 50 |
| 12 mm | 50 mm | 1.8 mm | 0267 012 50 | 50 |
| 12 mm | 55 mm | 1.8 mm | 0267 012 55 | 100 |
| 12 mm | 60 mm | 1.8 mm | 0267 012 60 | 50 |
| 12 mm | 80 mm | 1.8 mm | 0267 012 80 | 50 |
| 12 mm | 90 mm | 1.8 mm | 0267 012 90 | 50 |
| 12 mm | 100 mm | 1.8 mm | 0267 012 100 | 50 |
| 12 mm | 120 mm | 1.8 mm | 0267 012 120 | 50 |
| 14 mm | 50 mm | 2 mm | 0267 014 50 | 10 |
| 14 mm | 80 mm | 2 mm | 0267 014 80 | 1 |
| 16 mm | 36 mm | 2.5 mm | 0267 016 36 | 100 |
| 16 mm | 40 mm | 2.5 mm | 0267 016 40 | 25 |
| 16 mm | 45 mm | 2.5 mm | 0267 016 45 | 10 |
| 16 mm | 50 mm | 2.5 mm | 0267 016 50 | 25/100 |
| 16 mm | 80 mm | 2.5 mm | 0267 016 80 | 25 |
| 20 mm | 40 mm | 3 mm | 0267 020 40 | 10 |
| 20 mm | 50 mm | 4 mm | 0267 020 50 | 25 |
| 20 mm | 70 mm | 4 mm | 0267 020 70 | 10 |

Details/Application

