

Injectable mortar WIT-PE 500 WIT-PE 500 for concrete and post-installed rebar connection

Long processing time, ideal for deep effective anchorage depths

Two-component reactive resin mortar, pure epoxy, styrene-free

Individual attachment in cracked and non-cracked concrete, seismic performance category C1 (M12 to M30) and C2 (M12, M16):

Anchor rod W-VD-A, anchor rod W-VI-A, standard threaded rod with acceptance test certificate 3.1

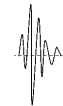
Reinforcement attachment with subsequent mortaring (REBAR)

Cartridge can continue to be used until the best before date, by changing the mixer nozzle or resealing it with the end cap



Illustration only

23.6,
29.1



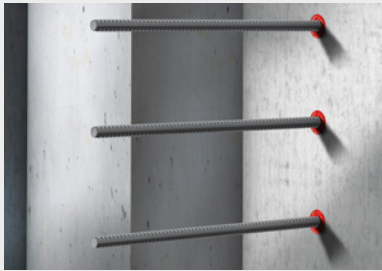
Type description	WIT-PE 500
Container	Double cartridge
Contents	385 ml
Included in delivery	Mortar cartridge 385 ml (side-by-side) + 1 x mixer nozzle
Suitable application gun	Battery-powered application gun 585ml, Pneumatic application gun 585ml, EasyMax 385 ml, HandyMax 585 ml
Min./max. processing temperature/conditions	5 to 40 °C/temperature in the anchorage ground during processing and hardening
Min./max. ambient temperature/Conditions	-40 to 72 °C/after completely curing process
Temperature resistance, long-term temperatures max.	43 °C
Temperature resistance, short-term temperatures max.	72 °C
Shelf life from production/conditions	24 Month/cool and dry storage area, 5 °C to 25 °C
Approval	ETA-09/0040, ETA-07/0313
Chemical basis	Pure-Epoxy, styrene free
Colour	Red

Art. no. 0903 480 001

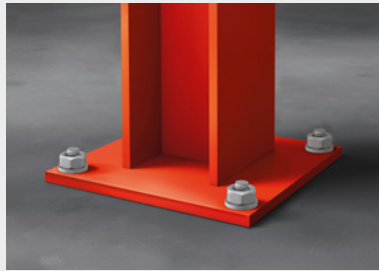
P. Qty.: 12

Details/Application

- Suitable for attaching metal structures, metal profiles, wooden structures, brackets, pipes, cable conduits etc.
- Suitable for structural expansions, ceiling and wall attachments, expansion of load-bearing structures, reinforcement of load-bearing structures, attachment of balconies and canopies, sealing of temporary openings and "forgotten" reinforcing bars



Post-installed rebar connection (REBAR)

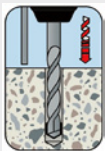


Heavy steel structures

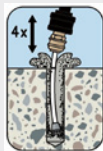


High bays

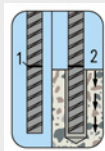
Hammer/Compressed Air Drilling Procedure:



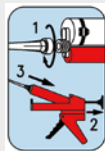
Create the drill hole



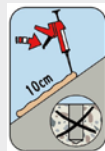
Clean the drill hole: 4x blow out with compressed air > 6 bar



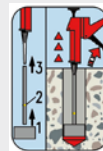
Place the setting depth mark on the rod and check the drilling hole depth



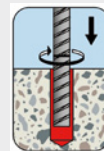
Screw mixer to cartridge; use application gun



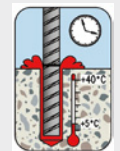
Before using, apply about 10 cm of product (not into the drill hole)



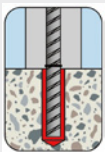
Mount injection equipment, fill injection mortar from bottom of drill hole



Insert the reinforcement bar until it reaches the mark with a slight turning movement

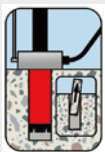


Visual check of the mortar filling quantity, observe maximum processing time

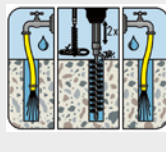


Attach component after complying with hardening time

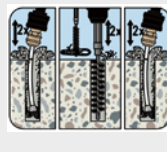
Diamond Drilling Behavior:



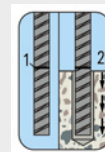
Make the drill hole, break out the drill core



2x flush with water (Until clear water comes)/brush 2x/flush 2x with water (Until clear water comes)



2x blow-out/2x brush-out/2x blow-out



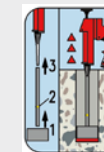
Place the setting depth mark on the rod and check the drilling hole depth



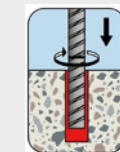
Screw mixer to cartridge; use application gun



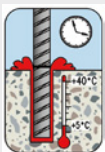
Before using, press out about 10 cm of product (not into the drill hole)



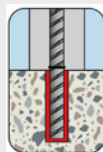
Mount injection equipment, fill composite mortar from the bottom of the drill hole



Insert the reinforcement bar until it reaches the mark with a slight turning movement



Visual check of the mortar filling quantity, observe maximum processing time



Attach component after observing curing time

Proof of performance

- European Technical Assessment ETA-09/0040: Individual fixing point + cracked and uncracked concrete (anchor rod W-VD-A, anchor rod W-VI-A, standard threaded rod with acceptance test certificate 3.1), seismic performance category C1 (M12 to M30) and C2 (M12, M16)
- European Technical Assessment ETA-07/0313: Post-installed rebar connection (REBAR)



Related products for	Designation	Art. no.
0903 480 001	Cordless application gun WIT	0891 003 585
	Pneumatic 2C application gun WIT	0891 017
	Application gun For WIT-PE 500 chemical anchoring products	0891 018
	Mixer nozzle For WIT-PE 500 (385 ml, 585 ml, 1400 ml) and WIT-VM 250 (825 ml) cartridges	0903 488 101